



Weasler®

***AFTERMARKET
PRODUCT GUIDE***

**METRIC DRIVELINES
& COMPONENTS**

METRIC DRIVELINES & COMPONENTS

SAFETY SECTION

WARNING!

- Be certain to disengage PTO shaft and to turn off the tractor before making any operational maintenance inspections or repairs. Keep clear of the machine until all parts have stopped moving.
- NEVER operate an implement with driveline guards missing or in a damaged condition.
- Guards must rotate freely on the yokes.

SAFETY DECALS



PART NO.: 13-10022

IMPORTANT

- CHECK THAT *GUARD MISSING DECAL* ON STEEL TUBE UNDER INNER GUARD AND *ROTATING DRIVELINE DECAL* ON OUTER GUARD ARE FIRMLY AFFIXED, UNDAMAGED AND READABLE - **IF NOT, REPLACE.**
- GUARDS MUST ROTATE FREELY ON YOKES



PART NO.: 13-10021

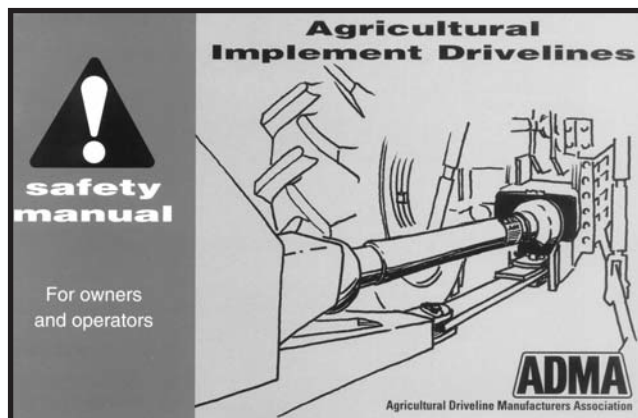
FOR USE ON
IMPLEMENT END
ONLY



ALL CLUTCHES MUST BE USED ON THE IMPLEMENT END ONLY
Yellow decal is provided on clutch.

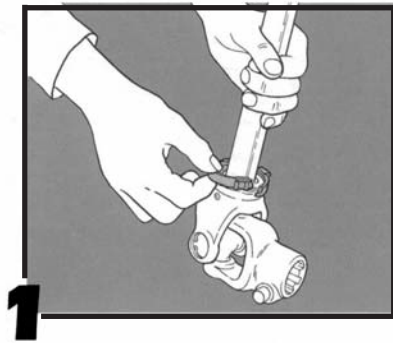
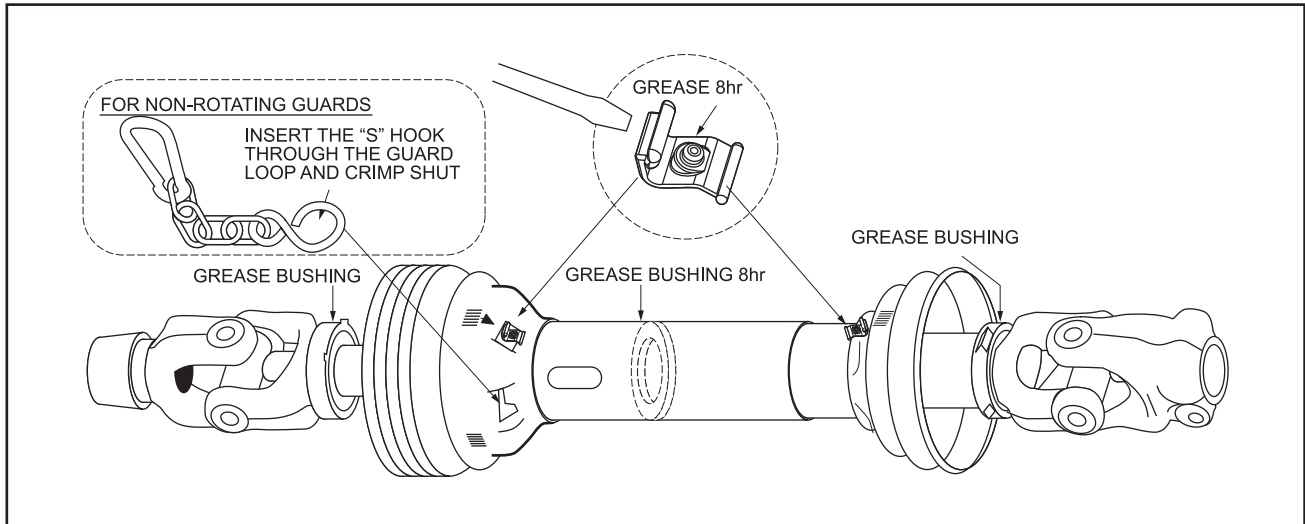
SAFETY MANUAL -

The *Agricultural Driveline Manufacturers Association (ADMA)* has printed a Safety Manual for owners and operators of agricultural machinery. Copies can be ordered from Weasler.
PART NO.: 56-15123

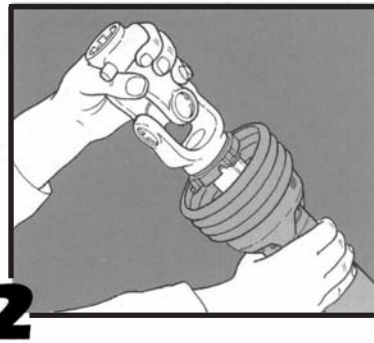


EASY LOCK GUARD SYSTEM

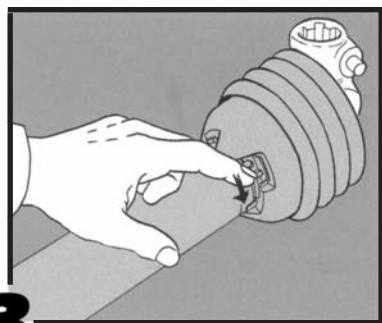
INSTRUCTIONS FOR REMOVAL AND INSTALLATION OF EASY LOCK GUARDS



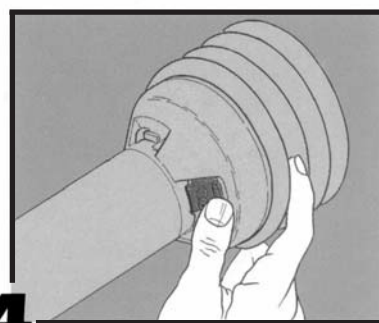
1 Clean and grease bearing raceway before the nylon bearing is placed in the groove. Grease any remaining nylon bearings in guard.



2 Slide guard half over driveline and insert nylon bearing tabs into the openings in the guard.



3 Turn the nylon bearing until it engages into the guard.

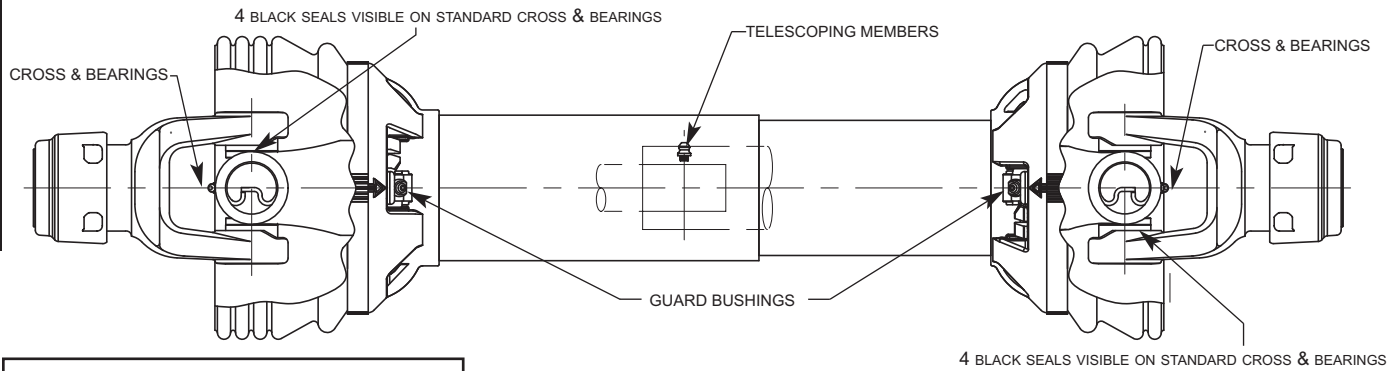


4 Push *Easy Lock* clip into position. The nylon bearing and guard are now secure. **GUARDS MUST ROTATE FREELY ON YOKES.**

5 **TO REMOVE GUARD** - Use screwdriver to release *Easy Lock* clip. Turn the nylon bearings to disengage from the guard and remove guard.

GREASING RECOMMENDATIONS

Be certain to follow greasing instructions as identified below:



TELESCOPING DRIVELINES

LUBRICATE ALL FITTINGS WITH A GOOD QUALITY LITHIUM SOAP COMPATIBLE E.P. GREASE MEETING THE N.L.G.I. #2 SPECIFICATIONS AND CONTAINING NO MORE THAN 1% MOLYBDENUM DISULFIDE.

AN E.P. GREASE MEETING THE N.L.G.I. #2 SPECIFICATIONS AND CONTAINING 3% MOLYBDENUM DISULFIDE MAY BE SUBSTITUTED IN THE TELESCOPING MEMBERS ONLY.

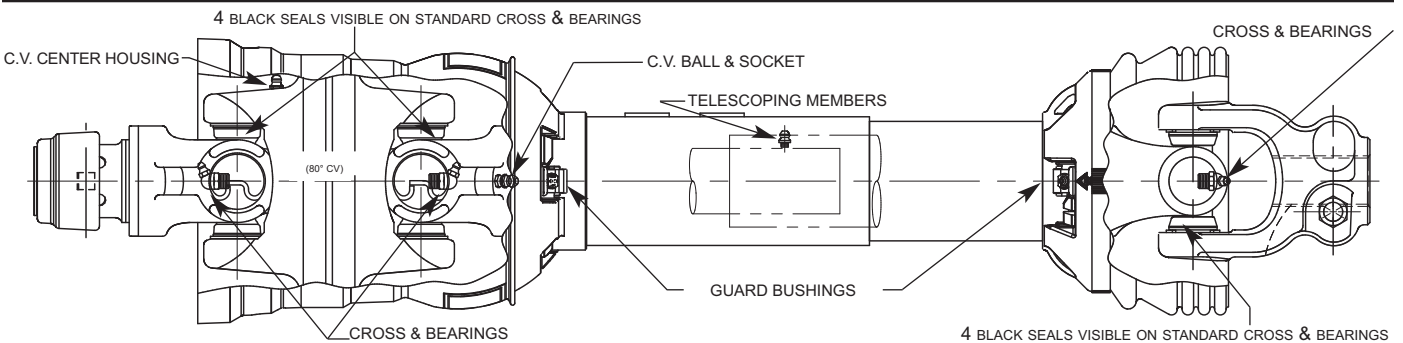
LOCATION	STANDARD INTERVAL	EXTENDED LUBE INTERVAL	LEVER ACTION PUMPS
CROSS & BEARINGS	*8 HRS.	50 HRS.	2-3
TELESCOPING MEMBERS	8 HRS.	50 HRS.	8-10
CE & NON-ROTATING GUARD BUSHINGS (1000 RPM MAX.)	8 HRS.	50 HRS.	2

ROTATING GUARD BUSHINGS SHOULD BE LUBRICATED UPON REPLACEMENT

*CONSTANT ANGLE APPLICATIONS MAY REQUIRE A LUBE INTERVAL OF 4 HOURS

CAUTION!! REPLACEMENT PARTS ARE NOT LUBRICATED

REPLACEMENT PARTS MUST BE LUBRICATED AT TIME OF ASSEMBLY AND DURING USE PER THE LUBE RECOMMENDATIONS



80° CONSTANT VELOCITY DRIVELINES

LUBRICATE ALL FITTINGS WITH A GOOD QUALITY LITHIUM SOAP COMPATIBLE E.P. GREASE MEETING THE N.L.G.I. #2 SPECIFICATIONS AND CONTAINING NO MORE THAN 1% MOLYBDENUM DISULFIDE.

AN E.P. GREASE MEETING THE N.L.G.I. #2 SPECIFICATIONS AND CONTAINING 3% MOLYBDENUM DISULFIDE MAY BE SUBSTITUTED IN THE TELESCOPING MEMBERS ONLY.

LOCATION	STANDARD INTERVAL	EXTENDED LUBE INTERVAL	LEVER ACTION PUMPS
CROSS & BEARINGS	*8 HRS.	50 HRS.	2-3
TELESCOPING MEMBERS	8 HRS.	50 HRS.	8-10
CV BALL & SOCKET	*8 HRS.	50 HRS.	4-6
CV CENTER HOUSING	24 HRS.	50 HRS.	12-15
CE & NON-ROTATING GUARD BUSHINGS (1000 RPM MAX.)	8 HRS.	50 HRS.	2

ROTATING GUARD BUSHINGS SHOULD BE LUBRICATED UPON REPLACEMENT

*CONSTANT ANGLE APPLICATIONS MAY REQUIRE A LUBE INTERVAL OF 4 HOURS

CAUTION!! REPLACEMENT PARTS ARE NOT LUBRICATED

REPLACEMENT PARTS MUST BE LUBRICATED AT TIME OF ASSEMBLY AND DURING USE PER THE LUBE RECOMMENDATIONS

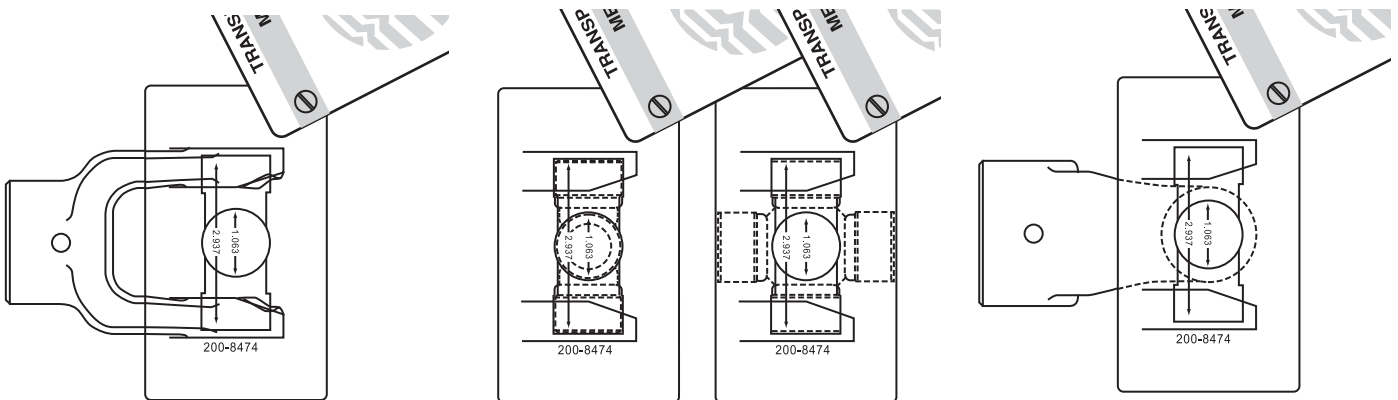
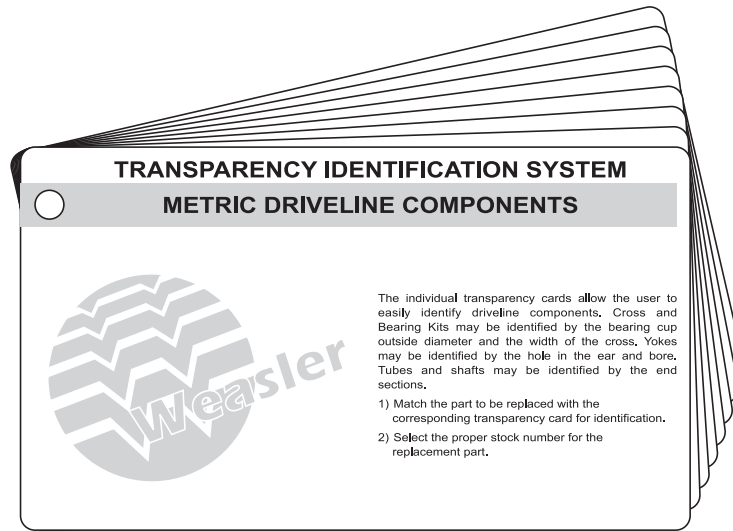
TRANSPARENCY IDENTIFICATION SYSTEM

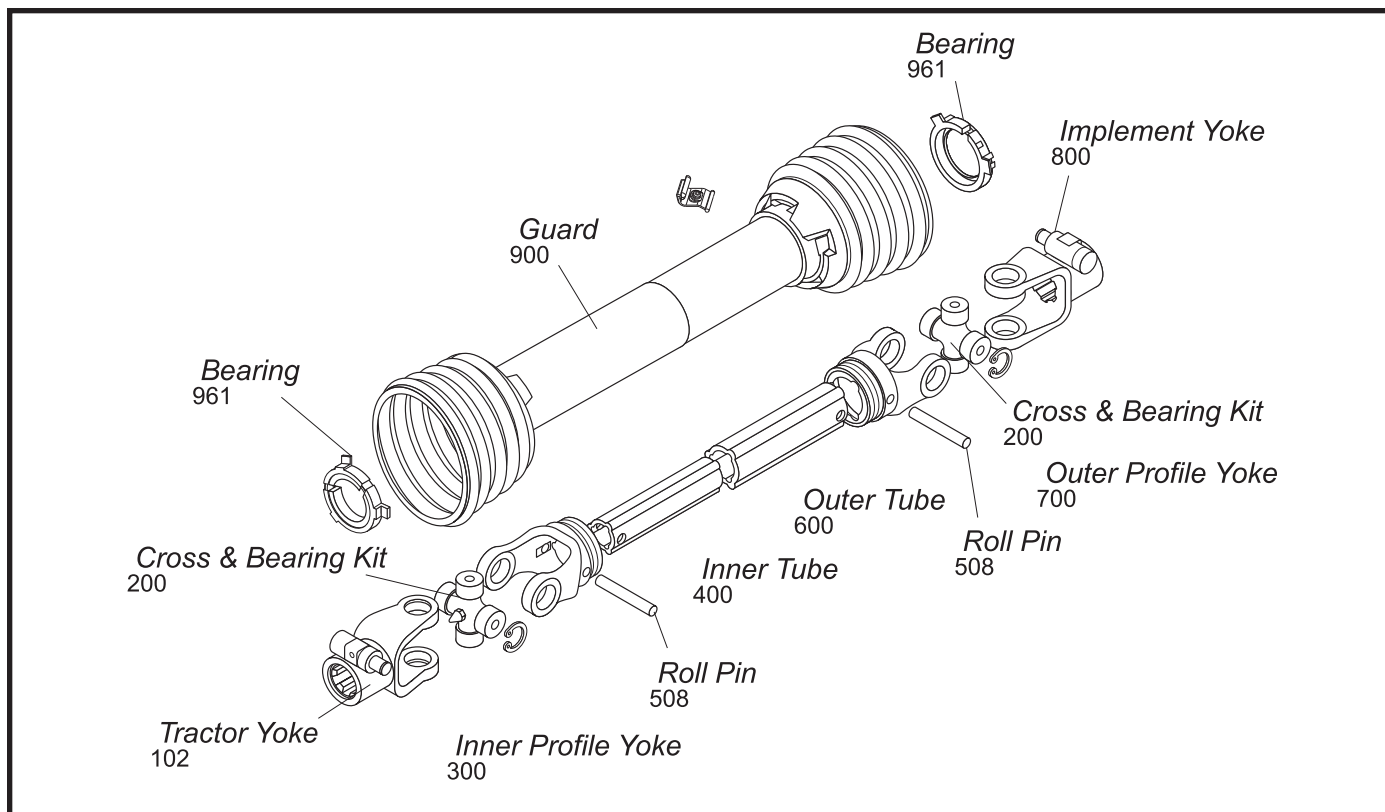
for Metric Driveline Components
(Stock No. 12008500)

The individual transparency cards will allow the user to easily identify driveline components. Cross and Bearing Kits may be identified by the bearing cup outside diameter and the width of the cross. Yokes may be identified by the hole in the ear and profile. Profile tubes may be identified by the end sections.

How to use the Transparency Identification System:

1. Match the part to be replaced with the corresponding transparency card for identification.
2. Select the proper stock number for the replacement part.





Each series has an exploded view for identification purposes. The drawing illustrates the components in the same sequence as an implement input driveline transmitting power from tractor to implement. Each component of the exploded view is identified by an eight-digit stock number to insure correct identification of each component.

Example: For metric components the 102 prefix denotes a Quick Disconnect Tractor Yoke on the exploded view.

When ordering any component in the exploded view (for any series), be sure the stock number begins with the appropriate three-digit prefix.

The digit immediately following the dash (-) will be a 6, 7 or 8.

A 6 indicates the item is interchangeable with Bondioli & Pavesi ONLY.

A 7 indicates the item is interchangeable with Walterscheid ONLY.

An 8 indicates the item is interchangeable with BOTH Bondioli & Pavesi AND Walterscheid.

This interchangeability designation is used for all components EXCEPT roll pins, guards and guard bearings.

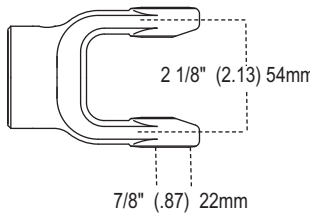
The following chart lists the approximate size replacement for Metric Driveline. These are not an exact interchange, and should be used as a general replacement guide only.

CROSS & BEARING KIT CROSS REFERENCE CHART FOR METRIC COMPONENTS

Cross & Bearing R-Kit Stock #	Cross & Bearing E-KIT Stock No.	Interchanges with Bondioli & Pavesi Series	Interchanges with Walterscheid Series
200-6154	201-6154	1	N/A
200-6580	201-6580	5	N/A
200-6794	201-6794	7N	N/A
200-6806	201-6806	8	N/A
200-6908	201-6908	9	N/A
200-7004	201-7004	N/A	2600
200-7155	201-7155	N/A	2100
200-7676	201-7676	N/A	2400
200-7890	N/A	11	N/A
200-7989	201-7989	N/A	2500
200-8261	201-8261	2	2200
200-8370	201-8370	3	1
200-8474	201-8474	4	2300
200-8692	201-8692	6	220
200-8706	201-8706	7 (Old Series)	230
200-7276	201-7276	N/A	2280
200-7491	201-7491	N/A	2380
200-7694	201-7694	N/A	2480
200-7906	201-7906	N/A	2580

DRIVELINE REPLACEMENT CHART

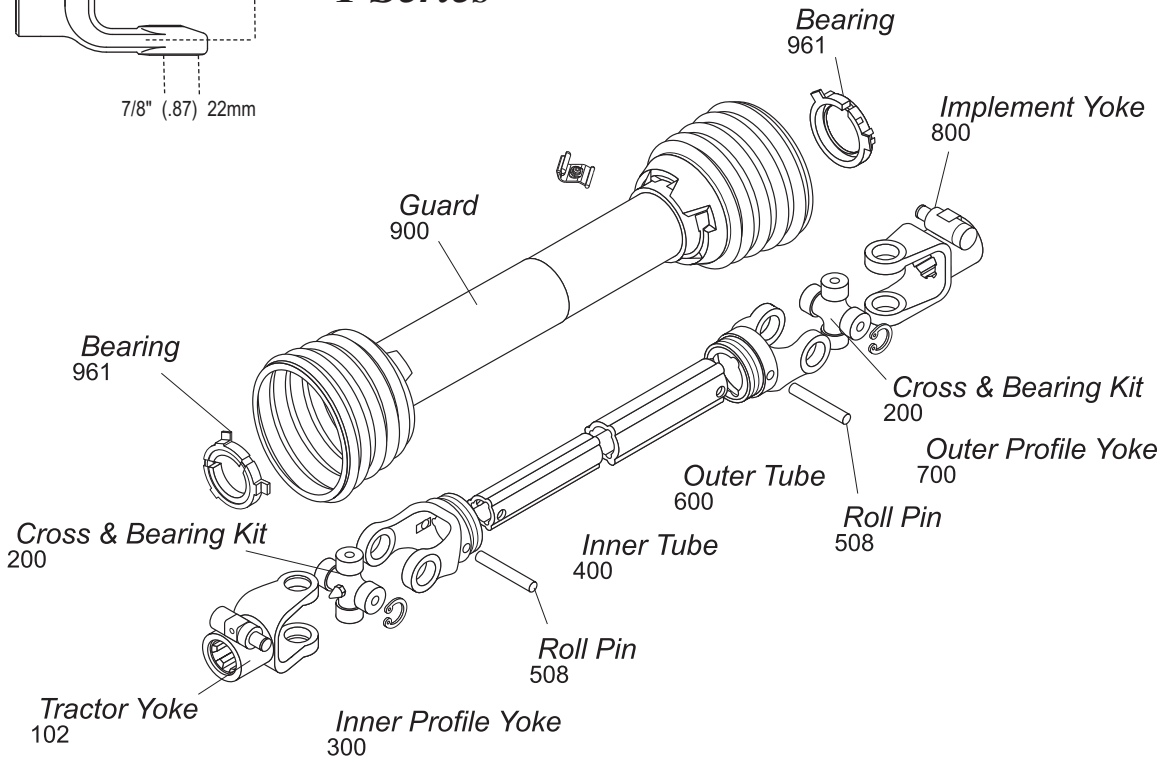
Weasler Series	Replacement for:	Weasler Series	Replacement for:
6	Bondioli & Pavesi 1 & 2 Series Walterscheid 2100 & 2200 Series	35	Bondioli & Pavesi 5 Series Walterscheid 220 & 2400 Series
12	Bondioli & Pavesi 3 Series Walterscheid I Series	44	Bondioli & Pavesi 6 & 7 Series Walterscheid II Series
14	Bondioli & Pavesi 4 Series Walterscheid 2300 Series	55	Bondioli & Pavesi 8 & 9 Series Walterscheid 2500 & 2600 Series



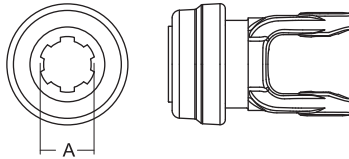
1 Series

Interchanges with Bondioli & Pavesi

AB1



Tractor Yoke

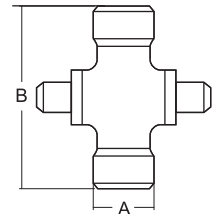


Safety Slide Lock

Repair Kit — Page 139

Stock Number	Dim. "A" Bore
101-6106	1 3/8" x 6 Spl.
101-6121	1 3/8" x 21 Spl.

Cross & Bearing Kit (R-Kit)

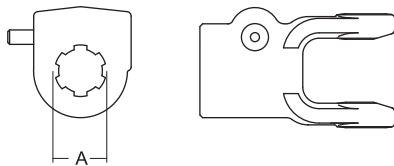


Snap Ring Located In Yoke

Stock Number	Dim. "A"		Dim. "B"	
	mm	in	mm	in
200-6154	22.0	7/8" (.87)	54.0	2 1/8" (2.13)

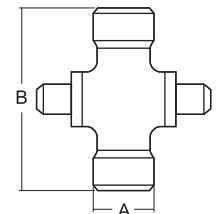
Quick Disconnect

Repair Kit — Page 139



Stock Number	Dim. "A" Bore
102-6118	1 1/8" x 6 Spl.
102-6106	1 3/8" x 6 Spl.
102-6121	1 3/8" x 21 Spl.

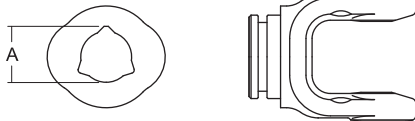
Extended Lubrication Cross & Bearing Kit (E-Kit)



Snap Ring Located In Yoke

Stock Number	Dim. "A"		Dim. "B"	
	mm	in	mm	in
201-6154	22.0	7/8" (.87)	54.0	2 1/8" (2.13)

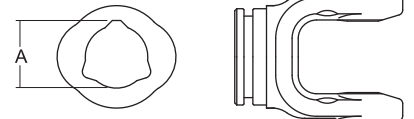
Inner Profile Yoke



With Bearing Groove
(Guard must rotate freely on yoke)

Stock Number	Dim. "A" Bore	
	mm	in
300-6126	27	1 1/16" (1.06)

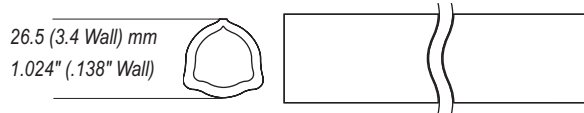
Outer Profile Yoke



With Bearing Groove
(Guard must rotate freely on yoke)

Stock Number	Dim. "A" Bore	
	mm	in
700-6133	33.0	1 5/16" (1.30)

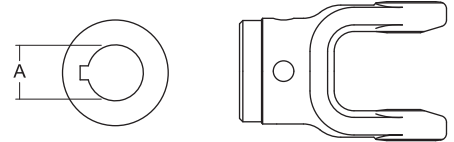
Inner Tube



26.5 (3.4 Wall) mm
1.024" (.138" Wall)

Stock Number	Length	
	m	in
400-6126	1.5	59 1/16" (59.06)
404-6126	1.0	39 3/8" (39.37)

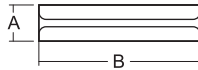
Implement Yoke



Round Bore
With Keyway & Set Screw

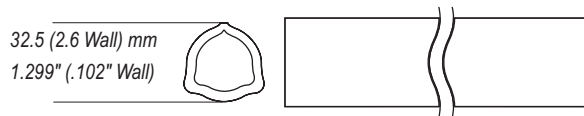
Stock Number	Dim. "A" Bore		Standard Keyway	
	mm	in	mm	in
800-6108	25.4	1" (1.0)	6.35	1/4" (.25)
800-6110	31.75	1 1/4" (1.25)	6.35	1/4" (.25)
800-6130	30.0	1 3/16" (1.18)	10.0	25/64" (.39)

Roll Pin



Stock Number	Dim. "A"		Dim. "B"	
	mm	in	mm	in
508-0850	8.0	5/16" (.31)	50.0	1 31/32" (1.97)

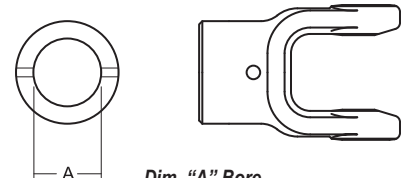
Outer Tube



32.5 (2.6 Wall) mm
1.299" (.102" Wall)

Stock Number	Length	
	m	in
600-6133	1.5	59 1/16" (59.06)
604-6133	1.0	39 3/8" (39.37)

Shear Pin
With Pin Hole

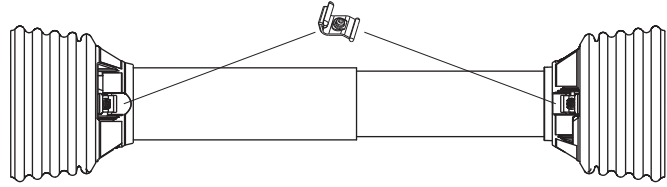


Stock Number	Dim. "A" Bore	
	mm	in
802-6110	31.75	1 1/4" (1.25)

1 Series (cont'd.)

Guard

Order Bearings As Required



Stock Number	Overall Driveline Length	Bearing Kit (2-per kit)
900-2548	48"	961-5029
900-2560	60"	961-5029

Assembly instructions included with guard

Note: When installing Guards observe the following:

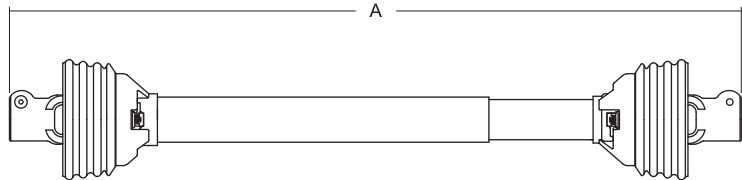
- 1) Install proper nylon bearing (See Page 14)
- 2) Check to insure guards rotate freely on the yokes

Easy Lock™ Replacement Kit

Part Number: 13005000 (4-per Kit)



Driveline

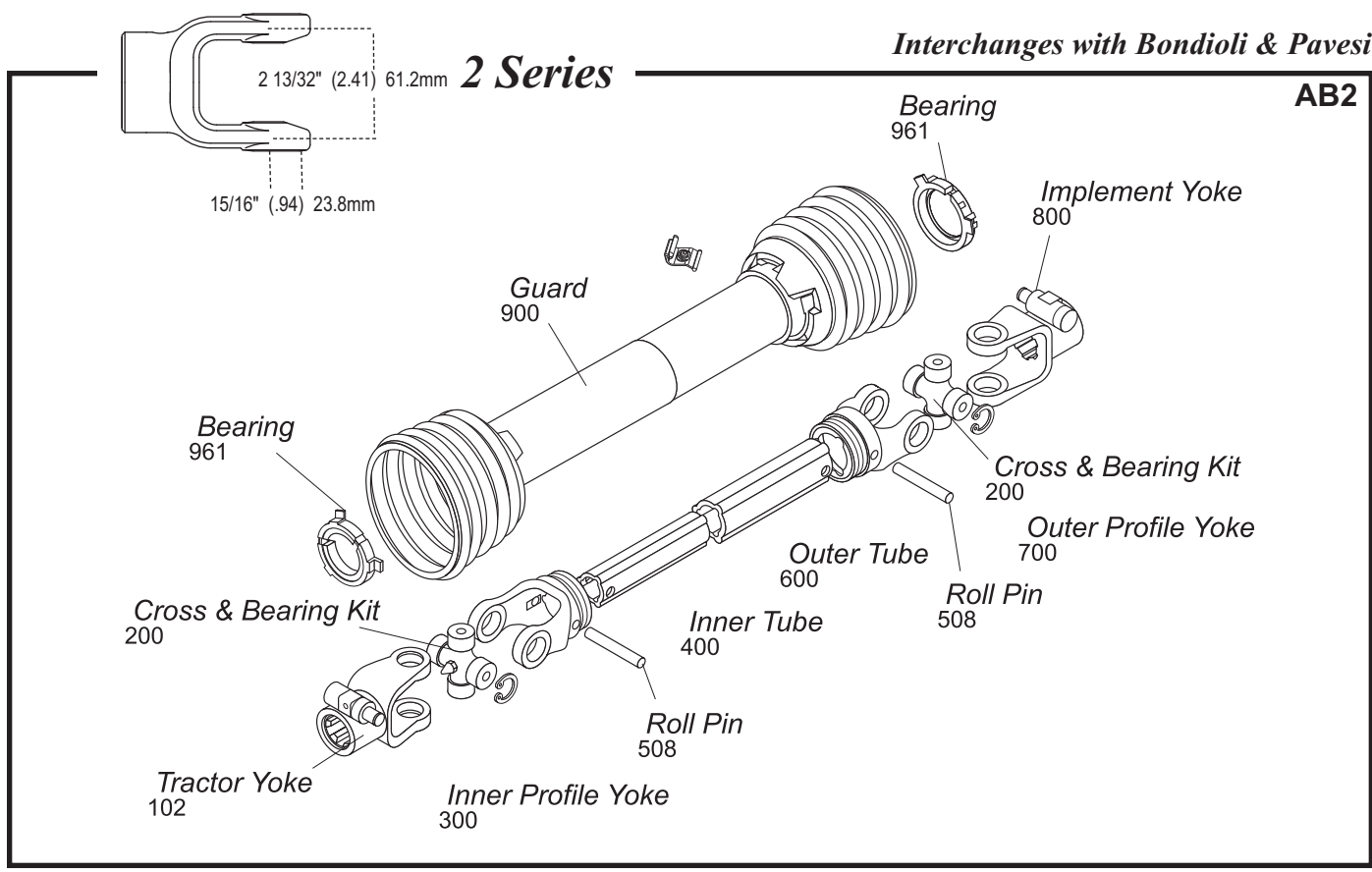


Stock Number	Overall Comp. Length Dim. "A"	Tractor Yoke	Implement Yoke
14006127	27"	1 3/8" x 6 Spl. QD	1 3/8" x 6 Spl. QD
14006135	35"	1 3/8" x 6 Spl. QD	1 3/8" x 6 Spl. QD
14006137	37"	1 3/8" x 6 Spl. QD	1 3/8" x 6 Spl. QD
14046148	48"	1 3/8" x 6 Spl. QD	*

* Drivelines are furnished without Cross & Bearing Kit and Implement Yoke. Select kit and yoke as required.

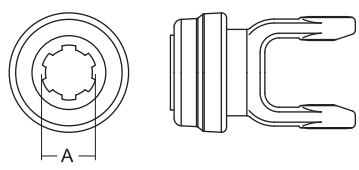
Interchanges with Bondioli & Pavesi

AB2



Cross & Bearing Kit and Outboard Yokes interchange with Walterscheid 2200 Series

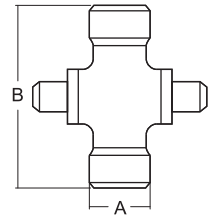
Tractor Yoke



Safety Slide Lock
Repair Kit — Page 139

Stock Number	Dim. "A" Bore
101-8206	1 3/8" x 6 Spl.
101-8221	1 3/8" x 21 Spl.

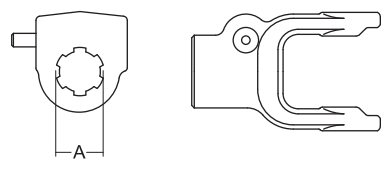
Cross & Bearing Kit (R-Kit)



Snap Ring Located In Yoke

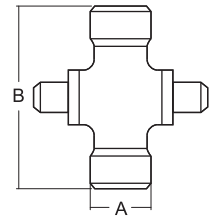
Stock Number	Dim. "A"		Dim. "B"	
	mm	in	mm	in
200-8261	23.8	15/16" (.94)	61.2	2 13/32" (2.41)

Quick Disconnect
Repair Kit — Page 139



Stock Number	Dim. "A" Bore
102-8218	1 1/8" x 6 Spl.
102-8206	1 3/8" x 6 Spl.
102-8221	1 3/8" x 21 Spl.

Extended Lubrication Cross & Bearing Kit (E-Kit)

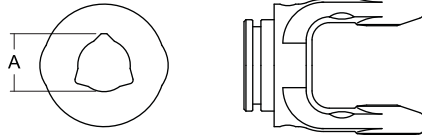


Snap Ring Located In Yoke

Stock Number	Dim. "A"		Dim. "B"	
	mm	in	mm	in
201-8261	23.8	15/16" (.94)	61.2	2 13/32" (2.41)

2 Series (cont'd.)

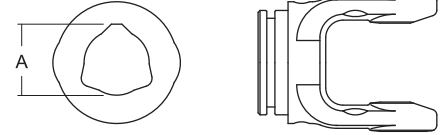
Inner Profile Yoke



With Bearing Groove
(Guard must rotate freely on yoke)

Stock Number	Dim. "A" Bore	
	mm	in
300-6229	29.8	1 11/64" (1.17)

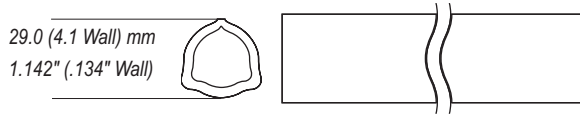
Outer Profile Yoke



With Bearing Groove
(Guard must rotate freely on yoke)

Stock Number	Dim. "A" Bore	
	mm	in
700-6236	36.8	1 29/64" (1.45)

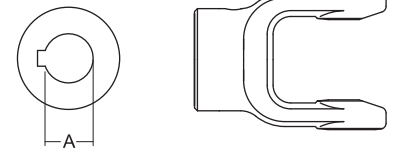
Inner Tube



29.0 (4.1 Wall) mm
1.142" (.134" Wall)

Stock Number	Length	
	m	in
400-6229	1.5	59 1/16" (59.06)
404-6229	1.0	39 3/8" (39.37)

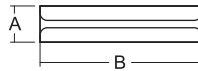
Implement Yoke



Round Bore
With Keyway & Set Screw

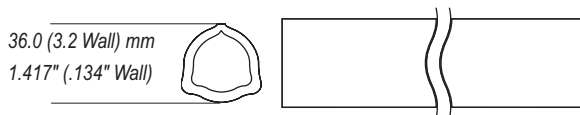
Stock Number	Dim. "A" Bore		Standard Keyway	
	mm	in	mm	in
800-8225	25.0	63/64" (.98)	8.0	5/16" (.31)
800-8208	25.0	1" (1.0)	6.35	1/4" (.25)
800-8218	28.6	1 1/8" (1.13)	6.35	1/4" (.25)
800-8230	30.0	1 3/16" (1.18)	8.0	5/16" (.31)
800-8210	31.8	1 1/4" (1.25)	6.35	1/4" (.25)
800-8220	31.8	1 1/4" (1.25)	8.0	5/16" (.31)
800-8211	34.9	1 3/8" (1.38)	8.0	5/16" (.31)

Roll Pin



Stock Number	Dim. "A"		Dim. "B"	
	mm	in	mm	in
508-0860	8.0	5/16" (.31)	60.0	2 23/64" (2.36)

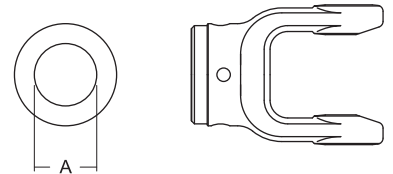
Outer Tube



36.0 (3.2 Wall) mm
1.417" (.134" Wall)

Stock Number	Length	
	m	in
600-6236	1.5	59 1/16" (59.06)
604-6236	1.0	39 3/8" (39.37)

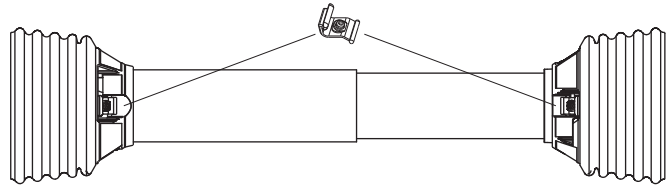
Shear Pin Yoke



With Pinhole

Stock Number	Dim. "A" Bore	
	mm	in
802-8220	31.8	1 1/4" Rd (1.25)
802-8222	34.9	1 3/8" Rd. (1.38)

Guard



Order Bearings As Required

Stock Number	Overall Driveline Length	Bearing Kit (2-per kit)
900-2548	48"	961-2502
900-2560	60"	961-2502

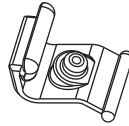
Assembly instructions included with guard

Note: When installing Guards observe the following:

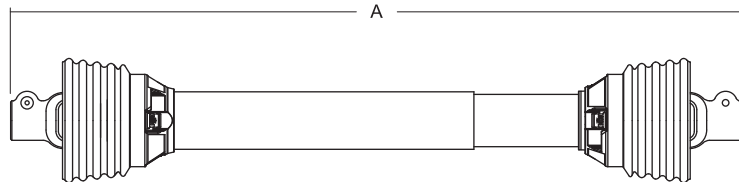
- 1) Install proper nylon bearing (See Page 14)
- 2) Check to insure guards rotate freely on the yokes

Easy Lock™ Replacement Kit

Part Number: 13005000 (4-per Kit)

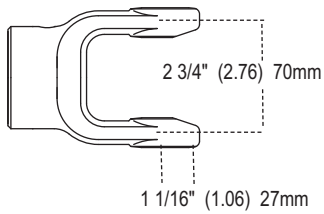


Driveline



Stock Number	Overall Comp. Length Dim. "A"	Tractor Yoke	Implement Yoke
14006247	47"	1 3/8" x 6 Spl. QD	1 3/8" x 6 Spl. QD
14006251	51"	1 3/8" x 6 Spl. QD	1 3/8" Rd w/Pinhole
14006252	52"	1 3/8" x 6 Spl. QD	1 1/4" Rd w/Pinhole
14046248	48"	1 3/8" x 6 Spl. QD	*
14046260	60"	1 3/8" x 6 Spl. QD	*
14106233	33"	1 3/8" x 6 Spl. QD	1 3/8" x 6 Spl. w/ Friction Clutch
14206252	52"	1 3/8" x 6 Spl. QD	1 3/8" x 6 Spl. w/Radial Pin Clutch
14406231	31"	1 3/8" x 6 Spl. Safety Slide Lock	1" Rd. w/1/4" Keyway Ball Shear

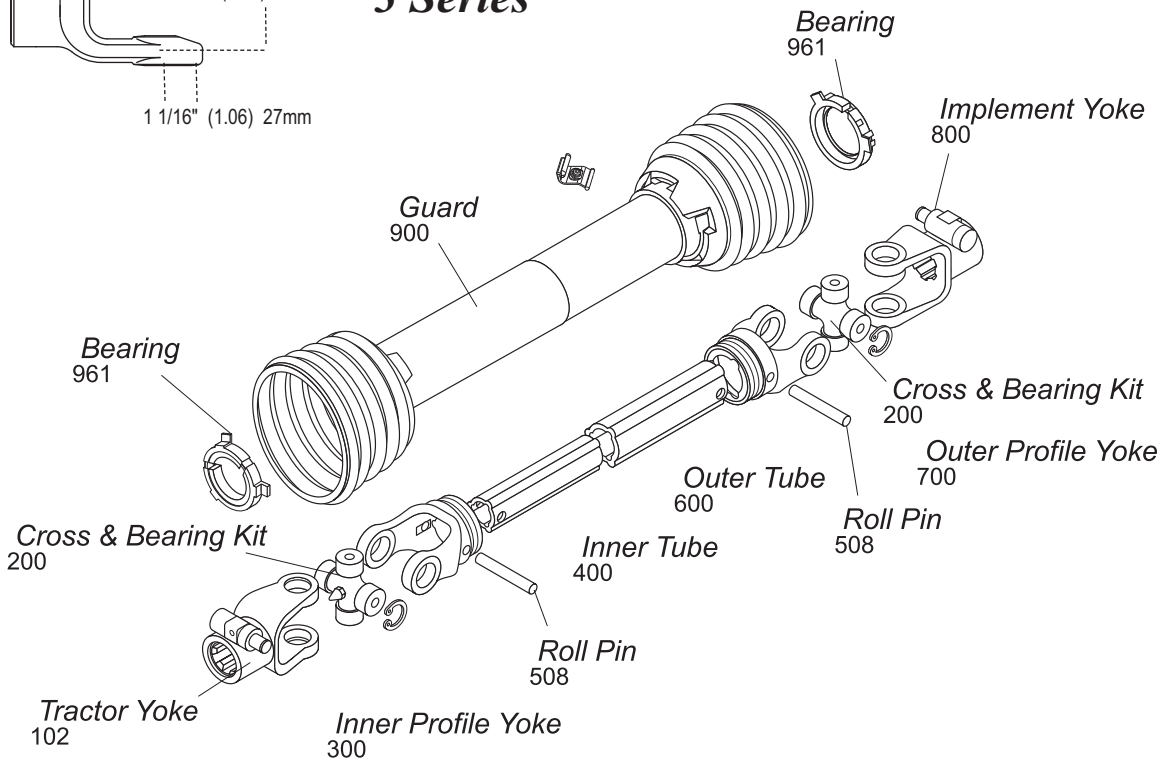
* Drivelines are furnished without Cross & Bearing Kit and Implement Yoke. Select kit and yoke as required.



3 Series

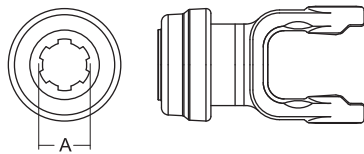
Interchanges with Bondioli & Pavesi

AB3



Cross & Bearing Kit and Outboard Yokes interchange with Walterscheid I Series

Tractor Yoke



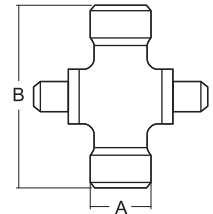
Safety Slide Lock

Repair Kit — Page 139

Stock

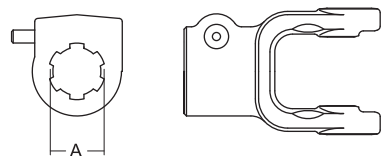
Number	Dim. "A" Bore
101-8306	1 3/8" x 6 Spl.
101-8321	1 3/8" x 21 Spl.

Cross & Bearing Kit (R-Kit)



Snap Ring Located In Yoke

Stock Number	Dim. "A"		Dim. "B"	
	mm	in	mm	in
200-8370	27.0	1 1/16" (1.06)	70.0	2 3/4" (2.76)



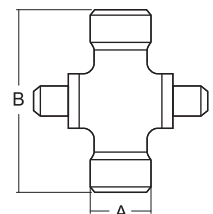
Quick Disconnect

Repair Kit — Page 139

Stock

Number	Dim. "A" Bore
102-8306	1 3/8" x 6 Spl.
102-8321	1 3/8" x 21 Spl.

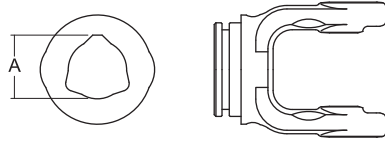
Extended Lubrication Cross & Bearing Kit (E-Kit)



Snap Ring Located In Yoke

Stock Number	Dim. "A"		Dim. "B"	
	mm	in	mm	in
201-8370	27.0	1 1/16" (1.06)	70.0	2 3/4" (2.76)

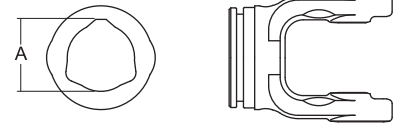
Inner Profile Yoke



With Bearing Groove
(Guard must rotate freely on yoke)

Stock Number	Dim. "A" Bore	
	mm	in
300-6336	36.8	1 29/64" (1.45)

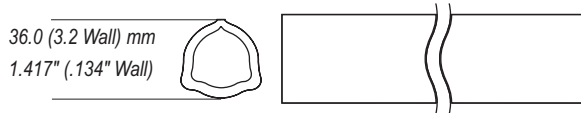
Outer Profile Yoke



With Bearing Groove
(Guard must rotate freely on yoke)

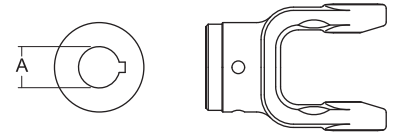
Stock Number	Dim. "A" Bore	
	mm	in
700-6343	44.0	1 47/64" (1.73)

Inner Tube



Stock Number	Length	
	m	in
600-6236	1.5	59 1/16" (59.06)
604-6236	1.0	39 3/8" (39.37)

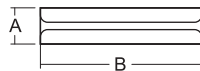
Implement Yoke



Round Bore
With Keyway & Set Screw

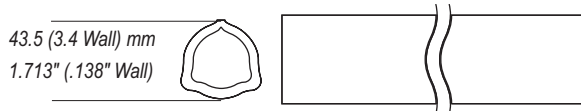
Stock Number	Dim. "A" Bore		Standard Keyway	
	mm	in	mm	in
800-8310	31.8	1 1/4" (1.25)	6.4	1/4" (.25)
800-8311	34.9	1 3/8" (1.38)	8.0	5/16" (.31)
800-8325	25.0	63/64" (.98)	8.0	5/16" (.31)
800-8330	30.0	1 3/16" (1.18)	8.0	5/16" (.31)

Roll Pin



Stock Number	Dim. "A"		Dim. "B"	
	mm	in	mm	in
508-0860	8.0	5/16" (.31)	60.0	2 23/64" (2.36)

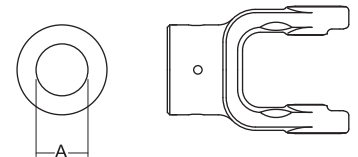
Outer Tube



Stock Number	Length	
	m	in
600-6343	1.5	59 1/16" (59.06)
604-6343	1.0	39 3/8" (39.37)

Shear Pin

With Pin Hole

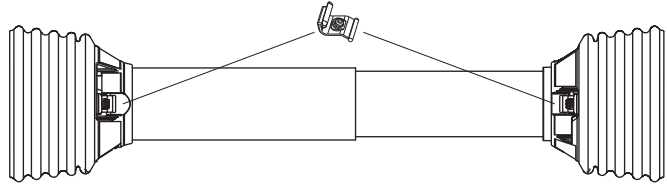


Stock Number	Dim. "A" Bore	
	mm	in
802-8310	31.8	1 1/4" (1.25)
802-8325	25.0	63/64" (.98)
802-8330	30.0	1 3/16" (1.18)
802-8335	34.9	1 3/8" (1.38)

3 Series (cont'd.)

Guard

Order Bearings As Required



Stock Number	Overall Driveline Length	Bearing Kit (2-per kit)
900-2548	48"	961-2534
900-2560	60"	961-2534

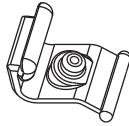
Assembly instructions included with guard

Note: When installing Guards observe the following:

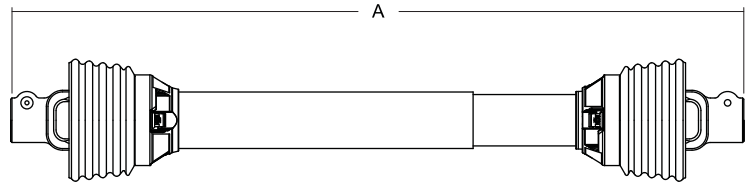
- 1) Install proper nylon bearing (See Page 14)
- 2) Check to insure guards rotate freely on the yokes

Easy Lock™ Replacement Kit

Part Number: 13005000 (4-per Kit)



Driveline



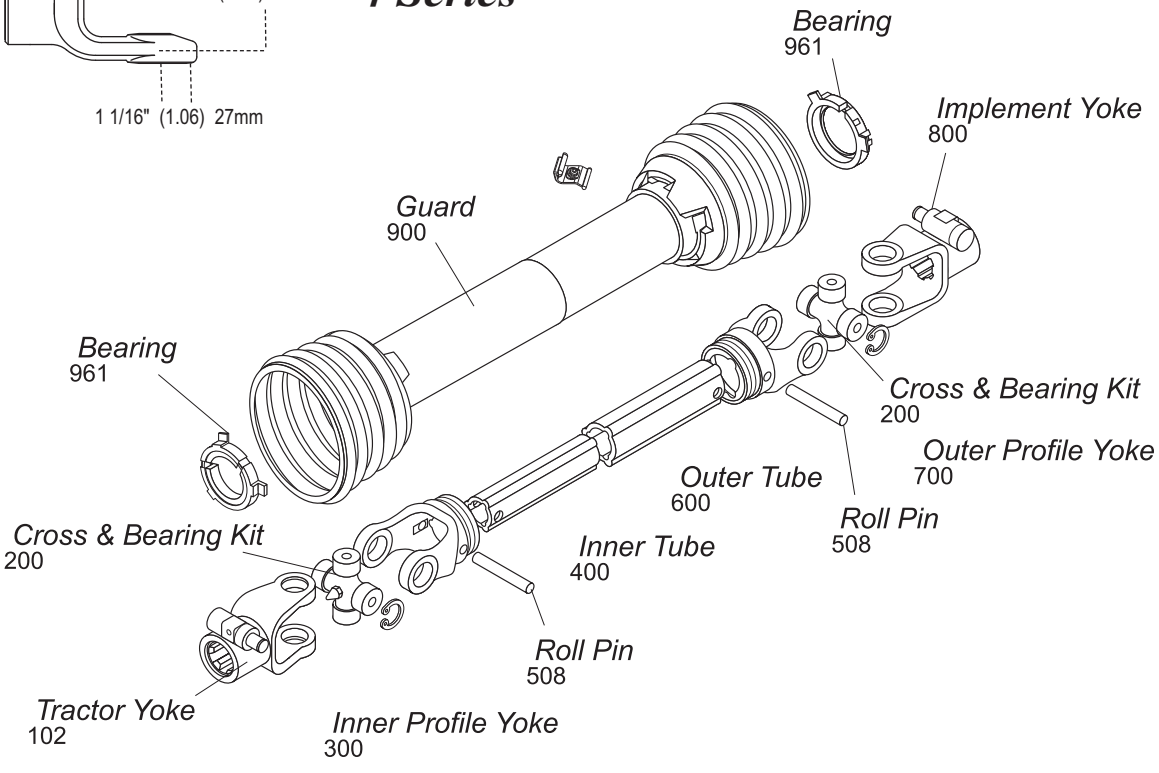
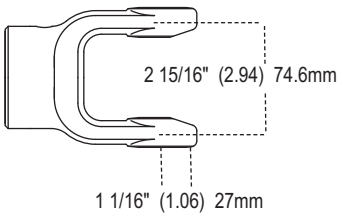
Stock Number	Overall Comp. Length Dim. "A"	Tractor Yoke	Implement Yoke
14006340	40"	1 3/8" x 6 Spl. QD	1 3/8" x 6 Spl. QD
14046348	48"	1 3/8" x 6 Spl. QD	*
14046360	60"	1 3/8" x 6 Spl. QD	*

* Drivelines are furnished without Cross & Bearing Kit and Implement Yoke. Select kit and yoke as required.

Interchanges with Bondioli & Pavesi

AB4

4 Series

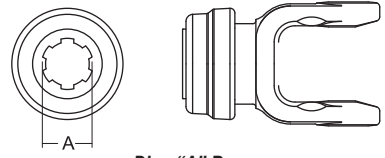


Cross & Bearing Kit and Outboard Yokes interchange with Walterscheid 2300 Series

Tractor Yoke

Safety Slide Lock

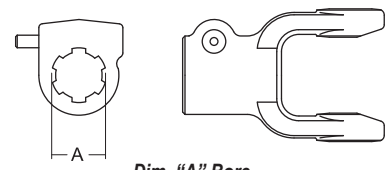
Repair Kit — Page 139



Stock Number	Dim. "A" Bore
101-8406	1 3/8" x 6 Spl.
101-8421	1 3/8" x 21 Spl.

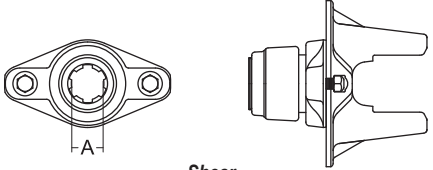
Quick Disconnect

Repair Kit — Page 139



Stock Number	Dim. "A" Bore
102-8406	1 3/8" x 6 Spl.
102-8418	1 1/8" Hex
102-8421	1 3/8" x 21 Spl.

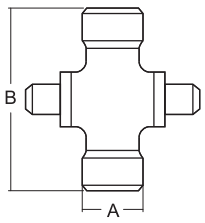
Ball Shear



Stock Number	Dim. "A" Bore	Shear Bolt
104-8406	1 3/8" x 6 Spl.	3/8" - 16 Gr. 5
104-8420	1 3/4" x 20 Spl.	3/8" - 16 Gr. 5
104-8421	1 3/8" x 21 Spl.	3/8" - 16 Gr. 5

Cross & Bearing Kit (R-Kit)

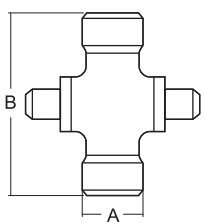
Snap Ring Located In Yoke



Stock Number	Dim. "A"		Dim. "B"	
	mm	in	mm	in
200-8474	27.0	1 1/16" (1.06)	74.6	2 15/16" (2.94)

Extended Lubrication Cross & Bearing Kit (E-Kit)

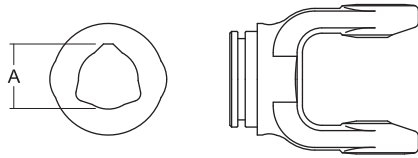
Snap Ring Located In Yoke



Stock Number	Dim. "A"		Dim. "B"	
	mm	in	mm	in
201-8474	27.0	1 1/16" (1.06)	74.6	2 15/16" (2.94)

4 Series (cont'd.)

Inner Profile Yoke

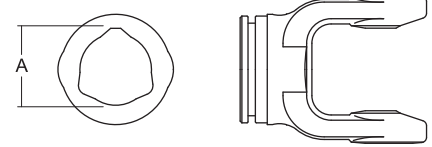


With Bearing Groove

(Guard must rotate freely on yoke)

Stock Number	Dim. "A" Bore	
	mm	in
300-6436	36.8	1 29/64" (1.45)

Outer Profile Yoke

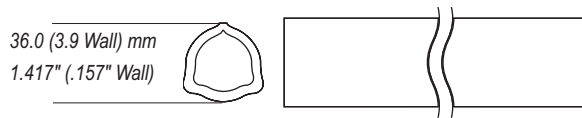


With Bearing Groove

(Guard must rotate freely on yoke)

Stock Number	Dim. "A" Bore	
	mm	in
700-6443	44.0	1 47/64" (1.73)

Inner Tube

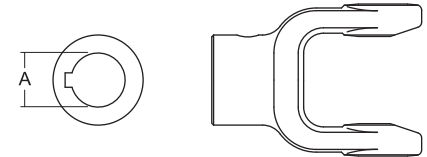


36.0 (3.9 Wall) mm

1.417" (.157" Wall)

Stock Number	Length	
	m	in
400-6436	1.5	59 1/16" (59.06)
404-6436	1.0	39 3/8" (39.37)

Implement Yoke

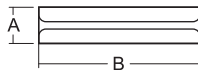


Round Bore

With Keyway & Set Screw

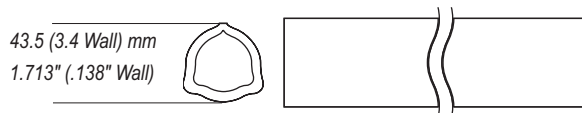
Stock Number	Dim. "A" Bore		Standard Keyway	
	mm	in	mm	in
800-8430	30.0	1 3/16" (1.18)	8.0	5/16" (.31)
800-8410	31.8	1 1/4" (1.25)	6.4	1/4" (.25)
800-8411	34.9	1 3/8" (1.38)	8.0	5/16" (.31)
800-8424	38.1	1 1/2" (1.50)	9.5	3/8" (.38)
800-8435	35.0	1 3/8" (1.38)	10.0	25/64" (.39)

Roll Pin



Stock Number	Dim. "A"		Dim. "B"	
	mm	in	mm	in
508-0860	8.0	5/16" (.31)	60.0	2 3/8" (2.36)

Outer Tube



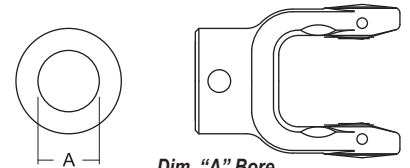
43.5 (3.4 Wall) mm

1.713" (.138" Wall)

Stock Number	Length	
	m	in
600-6343	1.5	59 1/16" (59.06)
604-6343	1.0	39 3/8" (39.37)

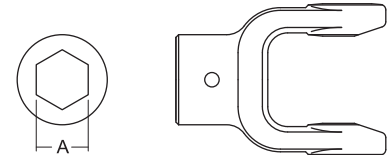
Shear Pin

With Pin Hole



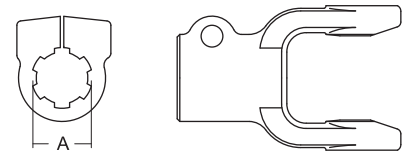
Stock Number	Dim. "A" Bore	
	mm	in
802-8410	31.8	1 1/4" (1.25)
802-8430	30.0	1 3/16" (1.18)
802-8435	35.0	1 3/8" (1.38)

Hex Bore



Stock Number	Dim. "A" Bore	
	mm	in
805-8418	28.9	1 9/64" (1.14)

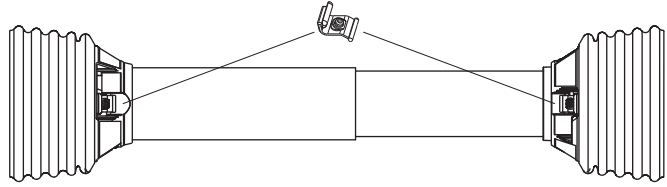
Clamp Yoke



Stock Number	Dim. "A" Bore	
	807-8406	1 3/8" x 6 Spl.
807-8420	1 1/4" Rd.	

Guard

Order Bearings As Required



Stock Number	Overall Driveline Length	Bearing Kit (2-per kit)
900-2548	48"	961-2534
900-2560	60"	961-2534

Assembly instructions included with guard

Note: When installing Guards observe the following:

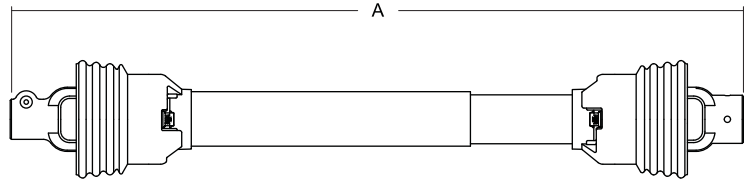
- 1) Install proper nylon bearing (See Page 14)
- 2) Check to insure guards rotate freely on the yokes

Easy Lock™ Replacement Kit

Part Number: 13005000 (4-per Kit)

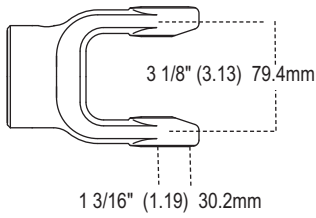


Driveline



Stock Number	Overall Comp. Length Dim. "A"	Tractor Yoke	Implement Yoke
14006424	48"	1 3/8" x 6 Spl. QD	1 1/2" Rd. w/3/8" Keyway
14006430	30"	1 3/8" x 6 Spl. QD	1 3/8" Rd. w/Pinhole
14006432	32"	1 3/8" x 6 Spl. QD	1 3/8" Rd. w/Pinhole
14006436	36"	1 3/8" x 6 Spl. QD	1 3/8" Rd. w/Pinhole
14006437	37"	1 3/8" x 6 Spl. QD	1 3/8" Rd. w/Pinhole
14006438	38"	1 3/8" x 6 Spl. QD	1 3/8" x 6 Spl. QD
14006442	42"	1 3/8" x 6 Spl. QD	1 3/8" Rd. w/Pinhole
14006446	46"	1 3/8" x 6 Spl. QD	1 3/8" x 6 Spl. QD
14006448	48"	1 3/8" x 6 Spl. QD	1 3/8" x 6 Spl. QD
14006451	51"	1 3/8" x 6 Spl. QD	1 3/8" Rd. w/Pinhole
14006453	53"	1 3/8" x 6 Spl. QD	1 1/4" Rd. w/Pinhole
14006455	55"	1 3/8" x 6 Spl. QD	1 3/8" x 6 Spl. QD
14046448	48"	1 3/8" x 6 Spl. QD	*
14046460	60"	1 3/8" x 6 Spl. QD	*
14106436	36"	1 3/8" x 6 Spl. QD	1 3/8" x 6 Spl. w/Friction Clutch
14106438	38"	1 3/8" x 6 Spl. QD	1 3/8" x 6 Spl. w/Friction Clutch
14206454	54"	1 3/8" x 6 Spl. QD	1 3/8" x 6 Spl. w/Radial Pin Clutch
14406428	28"	1 3/8" 6 Spl. Safety Slide Lock	1 1/4" Rd. w/1/4" Keyway Ball Shear

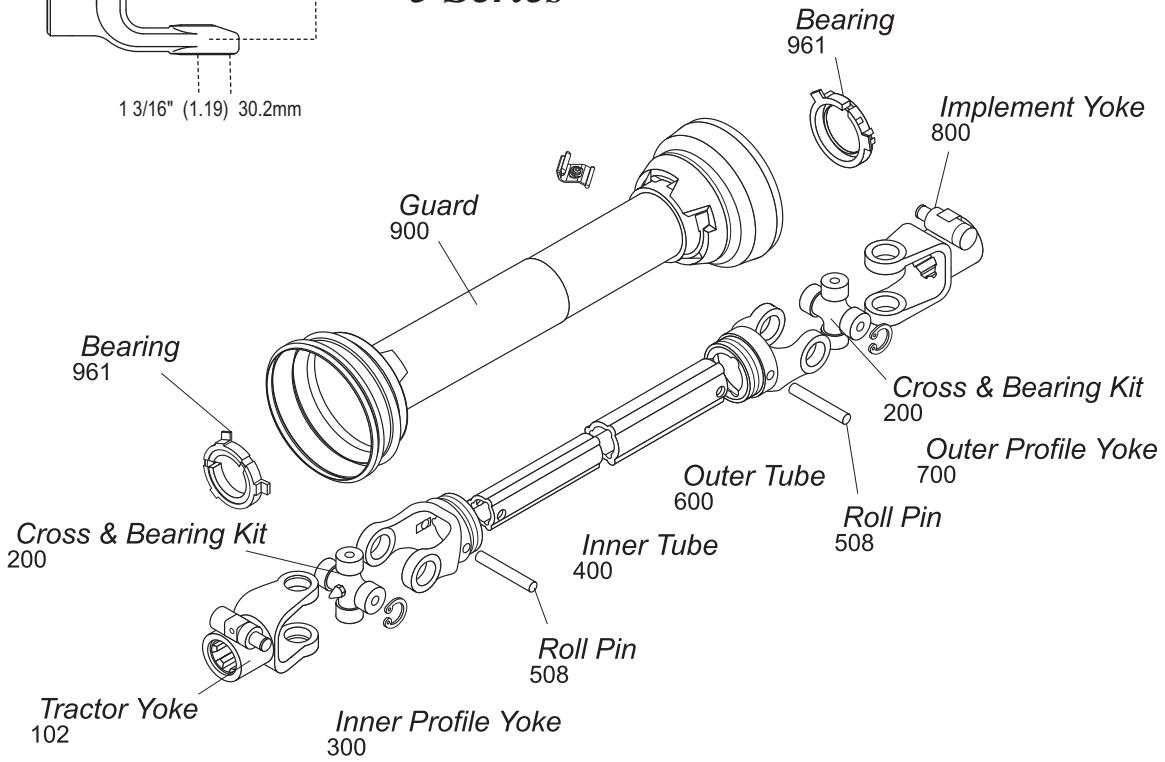
* Drivelines are furnished without Cross & Bearing Kit and Implement Yoke. Select kit and yoke as required.



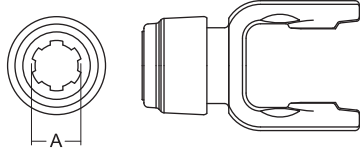
5 Series

Interchanges with Bondioli & Pavesi

AB5



Tractor Yoke

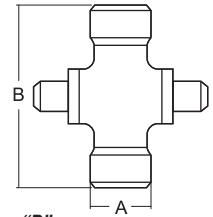


Safety Slide Lock
Repair Kit — Page 139

Stock Number	Dim. "A" Bore
101-6506	1 3/8" x 6 Spl.
101-6521	1 3/8" x 21 Spl.

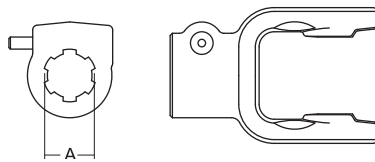
Cross & Bearing Kit (R-Kit)

Snap Ring Located In Yoke



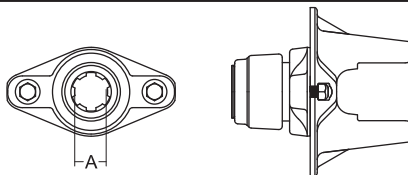
Stock Number	Dim. "A"		Dim. "B"	
	mm	in	mm	in
200-6580	30.2	1 3/16" (1.19)	79.4	3 1/8" (3.13)

Quick Disconnect
Repair Kit — Page 139



Stock Number	Dim. "A" Bore
102-6506	1 3/8" x 6 Spl.
102-6520	1 3/4" x 20 Spl.
102-6521	1 3/8" x 21 Spl.

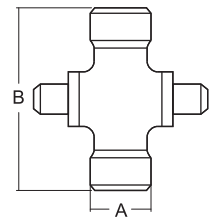
Ball Shear



Stock Number	Dim. "A" Bore	Shear Bolt
104-6506	1 3/8" x 6 Spl.	3/8" - 16 Gr. 5
104-6520	1 3/4" x 20 Spl.	3/8" - 16 Gr. 5
104-6521	1 3/8" x 21 Spl.	3/8" - 16 Gr. 5

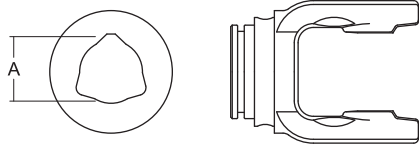
Extended Lubrication Cross & Bearing Kit (E-Kit)

Snap Ring Located In Yoke



Stock Number	Dim. "A"		Dim. "B"	
	mm	in	mm	in
201-6580	30.2	1 3/16" (1.19)	79.4	3 1/8" (3.13)

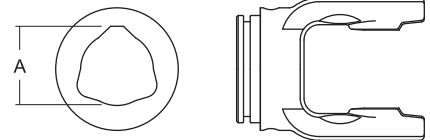
Inner Profile Yoke



With Bearing Groove
(Guard must rotate freely on yoke)

Stock Number	Dim. "A" Bore	
	mm	in
300-6545	45.2	1 25/32" (1.78)

Outer Profile Yoke

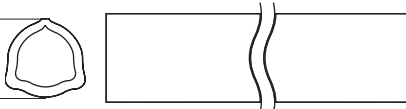


With Bearing Groove
(Guard must rotate freely on yoke)

Stock Number	Dim. "A" Bore	
	mm	in
700-6552	51.7	2 3/64" (2.04)

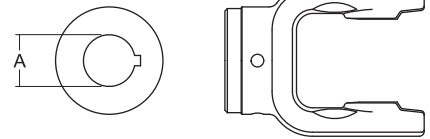
Inner Tube

45.0 (3.9 Wall) mm
1.77" (.15" Wall)



Stock Number	Length	
	m	in
400-6545	1.5	59 1/16" (59.06)
404-6545	1.0	39 3/8" (39.37)

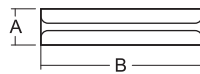
Implement Yoke



Round Bore
With Keyway & Set Screw

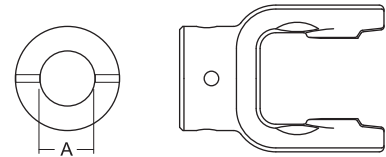
Stock Number	Dim. "A" Bore		Standard Keyway	
	mm	in	mm	in
800-6510	31.8	1 1/4" (1.25)	6.4	1/4" (.25)
800-6511	34.9	1 3/8" (1.38)	8.0	5/16" (.31)
800-6524	38.1	1 1/2" (1.50)	9.5	3/8" (.38)
800-6535	35.0	1 3/8" (1.378)	8.0	5/16" (.31)

Roll Pin



Stock Number	Dim. "A"		Dim. "B"	
	mm	in	mm	in
508-1075	10.0	25/64" (.394)	75.0	2 61/64" (2.95)

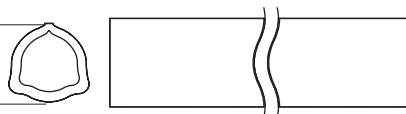
Shear Pin
With Pin Hole



Stock Number	Dim. "A" Bore	
	mm	in
802-6535	34.9	1 3/8" (1.38)

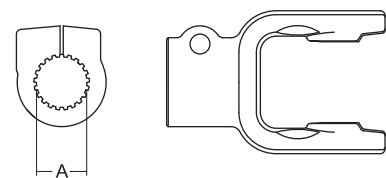
Outer Tube

51.5 (3.0 Wall) mm
2.03" (.12" Wall)



Stock Number	Length	
	m	in
600-6552	1.5	59 1/16" (59.0)
604-6552	1.0	39 3/8" (39.37)

Clamp Yoke

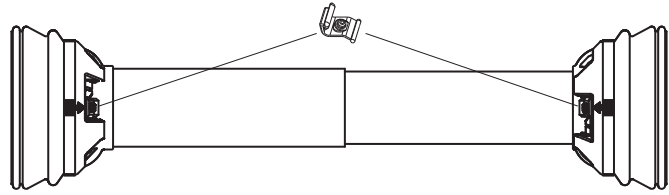


Stock Number	Dim. "A" Bore	
	mm	in
807-6521	35.0	1 3/8" x 21 Spl. (1.38)

5 Series (cont'd.)

Guard

Order Bearings As Required



Stock Number	Overall Driveline Length	Bearing Kit (2-per kit)
902-3548	48"	961-3505
902-3560	60"	961-3505

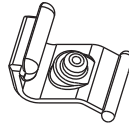
Assembly instructions included with guard

Note: When installing Guards observe the following:

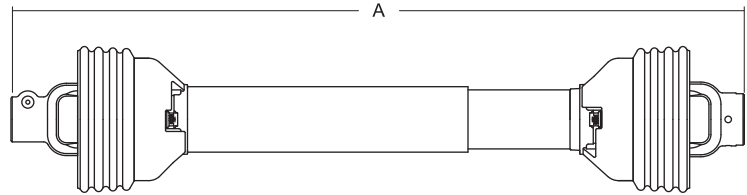
- 1) Install proper nylon bearing (See Page 14)
- 2) Check to insure guards rotate freely on the yokes

Easy Lock™ Replacement Kit

Part Number: 13005000 (4-per Kit)



Driveline



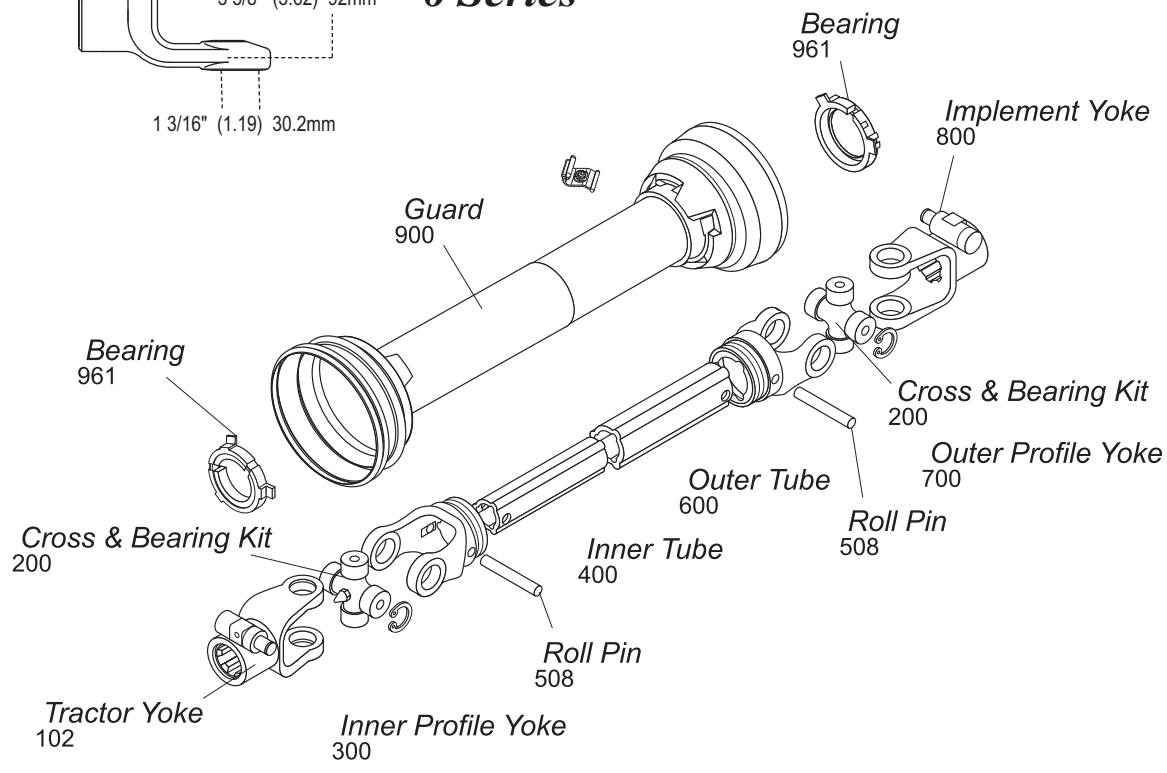
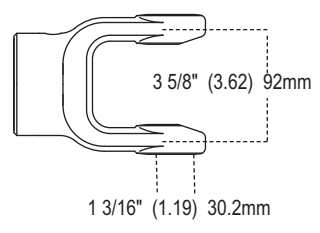
Stock Number	Overall Comp. Length Dim. "A"	Yoke Specifications	
		Tractor Yoke	Implement Yoke
14006524	48"	1 3/8" x 6 Spl. QD	1 1/2" Rd. w/3/8" Keyway
14006542	42"	1 3/8" x 6 Spl. QD	1 3/8" Rd. w/Pinhole
14006543	43"	1 3/8" x 6 Spl. QD	1 3/8" x 6 Spl. QD
14006546	46"	1 3/8" x 6 Spl. QD	1 3/8" x 6 Spl. QD
14006551	51"	1 3/8" x 6 Spl. QD	1 3/8" Rd. w/Pinhole
14006555	55"	1 3/8" x 6 Spl. QD	1 3/8" x 6 Spl. QD
14016524	48"	1 3/8" x 21 Spl. QD	1 1/2" Rd. w/3/8" Keyway
14016536	36"	1 3/8" x 6 Spl. QD	1 3/8" x 6 Spl. QD
14016542	42"	1 3/8" x 6 Spl. QD	1 3/8" x 6 Spl. QD
14046548	48"	1 3/8" x 6 Spl. QD	*
14046560	60"	1 3/8" x 6 Spl. QD	*
14106546	46"	1 3/8" x 6 Spl. QD	1 3/8" X 6 Spl. w/Friction Clutch
14306538	38"	1 3/8" x 6 Spl. QD	1 3/8" x 6 Spl. w/Overrunning Clutch

* Drivelines are furnished without Cross & Bearing Kit and Implement Yoke. Select kit and yoke as required.

Interchanges with Bondioli & Pavesi

6 Series

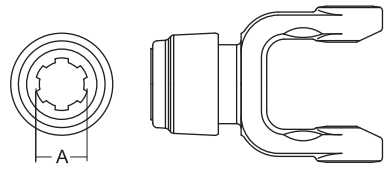
AB6



Cross & Bearing Kit and Outboard Yokes interchange with Walterscheid 220 Series

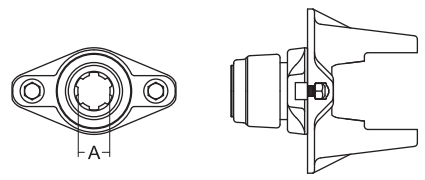
Tractor Yoke

Safety Slide Lock
Repair Kit — Page 139



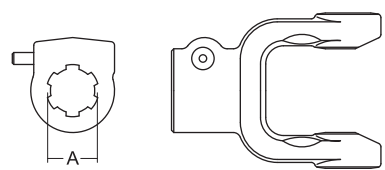
Stock Number	Dim. "A" Bore
101-8606	1 3/8" x 6 Spl.
101-8620	1 3/4" x 20 Spl.
101-8621	1 3/8" x 21 Spl.

Ball Shear



Stock Number	Dim. "A" Bore	Shear Bolt
104-8606	1 3/8" x 6 Spl.	3/8" - 16 Gr. 5
104-8620	1 3/4" x 20 Spl.	3/8" - 16 Gr. 5
104-8621	1 3/8" x 21 Spl.	3/8" - 16 Gr. 5

Quick Disconnect
Repair Kit — Page 139

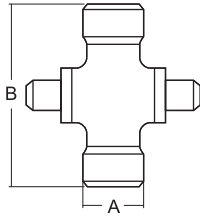


Stock Number	Dim. "A" Bore
102-8606	1 3/8" x 6 Spl.
102-8618	1 1/8" Hex
102-8620	1 3/4" x 20 Spl.
102-8621	1 3/8" x 21 Spl.

6 Series (cont'd.)

Cross & Bearing Kit (R-Kit)

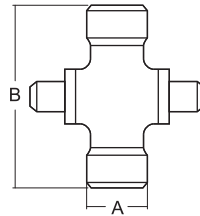
Snap Ring Located In Yoke



Stock Number	Dim. "A"		Dim. "B"	
	mm	in	mm	in
200-8692	30.2	1 3/16" (1.19)	92.0	3 5/8" (3.62)

Extended Lubrication Cross & Bearing Kit (E-Kit)

Snap Ring Located In Yoke

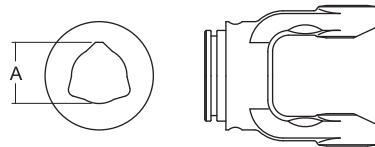


Stock Number	Dim. "A"		Dim. "B"	
	mm	in	mm	in
201-8692	30.2	1 3/16" (1.19)	92.0	3 5/8" (3.62)

Inner Profile Yoke

With Bearing Groove

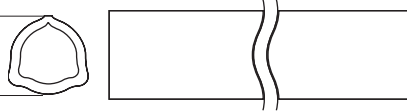
(Guard must rotate freely on yoke)



Stock Number	Dim. "A" Bore	
	mm	in
300-6645	45.2	1 25/32" (1.78)

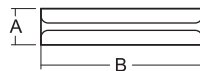
Inner Tube

45.0 (3.9 Wall) mm
1.77" (.154" Wall)



Stock Number	Length	
	m	in
400-6545	1.5	59 1/16" (59.06)
404-6545	1.0	39 3/8" (39.37)

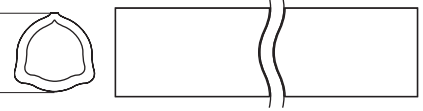
Roll Pin



Stock Number	Dim. "A"		Dim. "B"	
	mm	in	mm	in
508-1080	10.0	25/64" (.39)	80.0	3 5/32" (3.15)

Outer Tube

54.0 (4.5 Wall) mm
2.13" (.18" Wall)

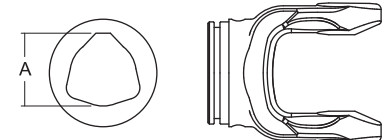


Stock Number	Length	
	m	in
600-6654	1.5	59 1/16" (59.06)
604-6654	1.0	39 3/8" (39.37)

Outer Profile Yoke

With Bearing Groove

(Guard must rotate freely on yoke)

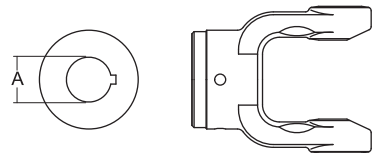


Stock Number	Dim. "A" Bore	
	mm	in
700-6654	54.2	2 1/8" (2.13)

Implement Yoke

Round Bore

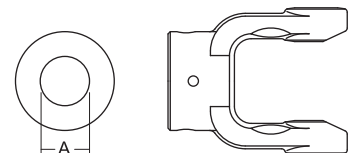
With Keyway & Set Screw



Stock Number	Dim. "A" Bore		Standard Keyway	
	mm	in	mm	in
800-8610	31.8	1 1/4" (1.25)	6.4	1/4" (.25)
800-8611	35.0	1 3/8" (1.38)	13.0	5/16" (.31)
800-8624	38.1	1 1/2" (1.50)	9.5	3/8" (.38)
800-8628	44.5	1 3/4" (1.75)	9.5	3/8" (.38)
800-8635	35.0	1 3/8" (1.38)	10.0	25/64" (.39)
800-8640	40.0	1 37/64" (1.57)	12.0	15/32" (.47)

Shear Pin

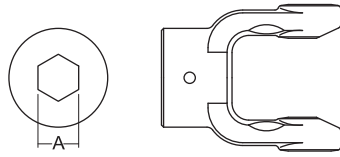
With Pin Hole



Stock Number	Dim. "A" Bore	
	mm	in
802-8611	34.9	1 3/8" (1.38)
802-8620	31.8	1 1/4" (1.25)

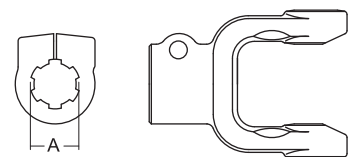
Implement Yoke - continued

Hex Bore



Stock Number	Dim. "A" Bore	
	mm	in
805-8618	28.9	1 9/64" Hex (1.14)

Clamp Yoke

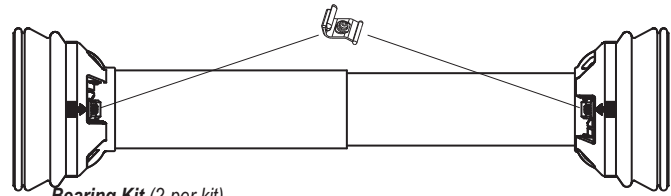


Stock Number	Dim. "A" Bore	
807-8606	1 3/8" x 6 Spl.	
807-8620	1 3/4" x 20 Spl.	
807-8621	1 3/8" x 21 Spl.	

Guard

Order Bearings As Required

Stock Number	Overall Driveline Length	Bearing Kit (2-per kit)
902-3548	48"	961-3567
902-3560	60"	961-3567



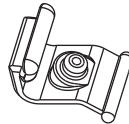
Assembly instructions included with guard

Note: When installing Guards observe the following:

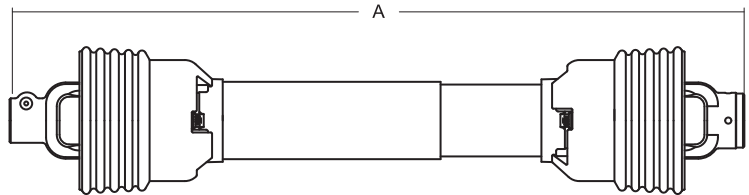
- 1) Install proper nylon bearing (See Page 14)
- 2) Check to insure guards rotate freely on the yokes

Easy Lock™ Replacement Kit

Part Number: 13005000 (4-per Kit)

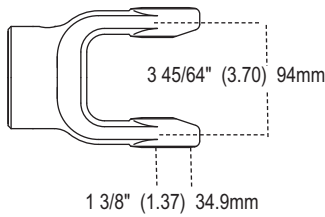


Driveline



Stock Number	Overall Comp. Length Dim. "A"	Driveline Components	
		Tractor Yoke	Implement Yoke
14006624	48"	1 3/8" x 6 Spl. QD	1 1/2" Rd. w/3/8" Keyway
14006628	48"	1 3/8" x 6 Spl. QD	1 3/4" Rd. w/3/8" Keyway
14006637	37"	1 3/8" x 6 Spl. QD	1 3/8" x 6 Spl. QD
14006642	42"	1 3/8" x 6 Spl. QD	1 3/8" x 6 Spl. QD
14006644	44"	1 3/8" x 6 Spl. QD	1 3/8" x 6 Spl. QD
14006652	52"	1 3/8" x 6 Spl. QD	1 3/8" Rd. w/Pinhole
14006655	55"	1 3/8" x 6 Spl. QD	1 3/8" x 6 Spl. QD
14006657	57"	1 3/8" x 6 Spl. QD	1 3/8" x 6 Spl. QD
14016624	48"	1 3/8" x 21 Spl. QD	1 1/2" Rd. w/3/8" Keyway
14016666	66"	1 3/8" x 21 Spl. QD	1 3/8" Rd. w/5/16" Keyway
14046648	48"	1 3/8" x 6 Spl. QD	*
14046660	60"	1 3/8" x 6 Spl. QD	*
14066644	44"	1 3/8" x 21 Spl. QD	1 3/8" x 21 Spl. QD
14106654	54"	1 3/8" x 6 Spl. QD	1 3/8" x 6 Spl. Clamp w/Friction Clutch
14106656	56"	1 3/4" x 20 Spl. Clamp	1 3/4" x 20 Spl. Clamp w/Friction Clutch
14106660	60"	1 3/8" x 6 Spl. QD	1 3/4" x 20 Spl. Clamp w/Friction Clutch
14106661	61"	1 3/4" x 20 Spl. QD	1 3/4" x 20 Spl. Clamp w/Friction Clutch
14106664	64"	1 3/4" x 20 Spl. Clamp	1 3/4" x 20 Spl. Clamp w/Friction Clutch
14116664	64"	1 3/8" x 21 Spl. Clamp	1 3/8" x 21 Spl. Clamp w/Friction Clutch
14126654	57"	1 3/8" x 6 Spl. QD	1 3/4" x 20 Spl. Clamp w/Friction Clutch
14126664	64"	1 3/4" x 20 Spl. Clamp	1 3/8" x 6 Spl. Clamp w/Friction Clutch
14306639	39"	1 3/8" x 6 Spl. QD	1 3/8" x 6 Spl. w/Overrunning Clutch
14406632	32"	1 3/8" x 6 Spl. Safety Slide Lock	1 1/2" Rd. w/3/8" Keyway Ball Shear
14406639	39"	1 3/8" x 6 Spl. Safety Slide Lock	1 3/8" x 6 Spl. Clamp Ball Shear

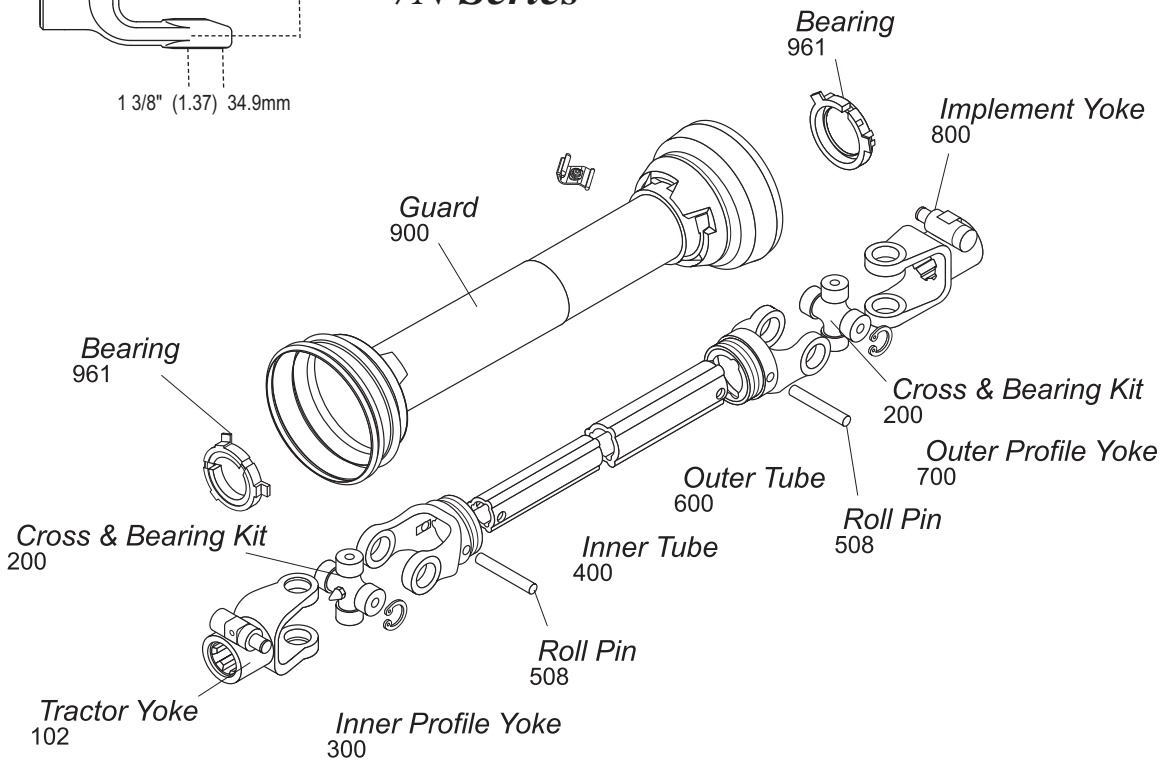
* Drivelines are furnished without Cross & Bearing Kit and Implement Yoke. Select kit and yoke as required.



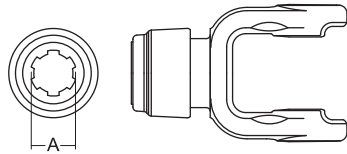
7N Series

Interchanges with Bondioli & Pavesi

AB7N



Tractor Yoke

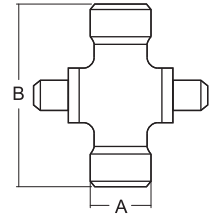


Safety Slide Lock

Repair Kit — Page 139

Stock Number	Dim. "A" Bore
101-6706	1 3/8" x 6 Spl.
101-6720	1 3/4" x 20 Spl.
101-6721	1 3/8" x 21 Spl.

Cross & Bearing Kit (R-Kit)

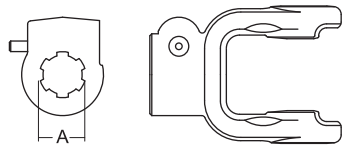


Snap Ring Located In Yoke

Stock Number	Dim. "A"		Dim. "B"	
	mm	in	mm	in
200-6794	34.9	1 3/8" (1.37)	94.0	3 45/64" (3.70)

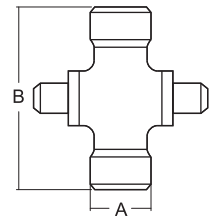
Quick Disconnect

Repair Kit — Page 139



Stock Number	Dim. "A" Bore
102-6706	1 3/8" x 6 Spl.
102-6720	1 3/4" x 20 Spl.
102-6721	1 3/8" x 21 Spl.
102-6728	1 3/4" x 6 Spl.

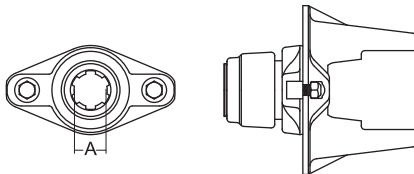
Extended Lubrication Cross & Bearing Kit (E-Kit)



Snap Ring Located In Yoke

Stock Number	Dim. "A"		Dim. "B"	
	mm	in	mm	in
201-6794	34.9	1 3/8" (1.37)	94.0	3 45/64" (3.70)

Ball Shear



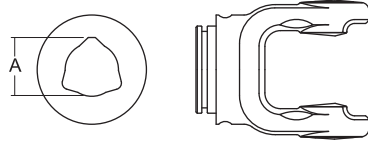
Stock Number	Dim. "A" Bore	Shear Bolt
104-6706	1 3/8" x 6 Spl.	3/8" - 16 Gr. 5
104-6721	1 3/8" x 21 Spl.	3/8" - 16 Gr. 5

AB7*

Stock Number	Dim. "A"		Dim. "B"	
	mm	in	mm	in
200-8706	30.2	1 3/16" (1.19)	106.5	4 3/16" (4.19)
201-8706	30.2	1 3/16" (1.19)	106.5	4 3/16" (4.19)

*Old Bondioli & Pavesi 7 Series is interchangeable with Walterscheid 230 Series. Original part identification begins with 23.

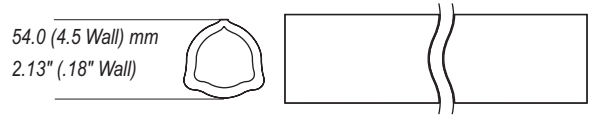
Inner Profile Yoke



With Bearing Groove
(Guard must rotate freely on yoke)

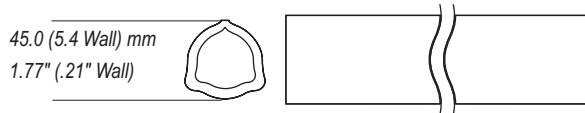
Stock Number	Dim. "A" Bore	
	mm	in
300-6745	45.2	1 25/32" (1.78)

Outer Tube



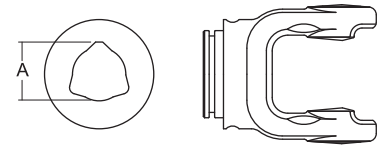
Stock Number	Length	
	m	in
600-6654	1.5	59 1/16" (59.06)
604-6654	1.0	39 3/8" (39.37)

Inner Tube



Stock Number	Length	
	m	in
400-6745	1.5	59 1/16" (59.06)
404-6745	1.0	39 3/8" (39.37)

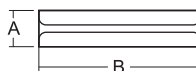
Outer Profile Yoke



With Bearing Groove
(Guard must rotate freely on yoke)

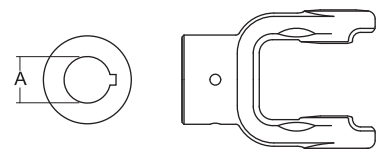
Stock Number	Dim. "A" Bore	
	mm	in
700-6754	54.2	2 1/8" (2.13)

Roll Pin



Stock Number	Dim. "A"		Dim. "B"	
	mm	in	mm	in
508-1080	10.0	13/32" (.39)	80.0	3 5/32" (3.15)

Implement Yoke



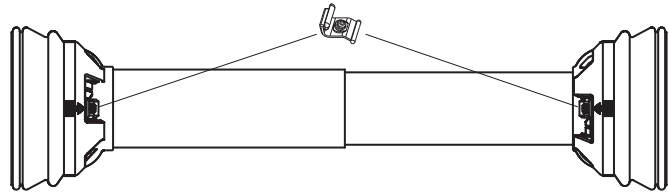
Round Bore
With Keyway & Set Screw

Stock Number	Dim. "A" Bore		Standard Keyway	
	mm	in	mm	in
800-6722	35.0	1 3/8" (1.38)	8.0	5/16" (.31)
800-6728	44.5	1 3/4" (1.75)	9.5	3/8" (.38)
800-6740	40.0	1 37/64" (1.57)	12.7	1/2" (.50)

7N Series (cont'd.)

Guard

Order Bearings As Required



Stock Number	Overall Driveline Length	Bearing Kit (2-per kit)
902-3548	48"	961-3567
902-3560	60"	961-3567

Assembly instructions included with guard

Note: When installing Guards observe the following:

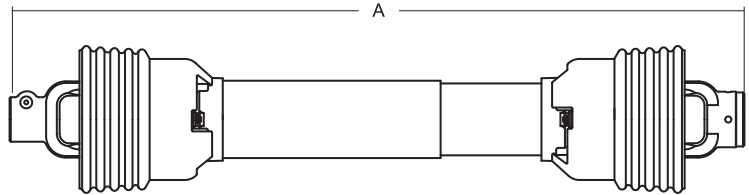
- 1) Install proper nylon bearing (See Page 14)
- 2) Check to insure guards rotate freely on the yokes

Easy Lock™ Replacement Kit

Part Number: 13005000 (4-per Kit)



Driveline



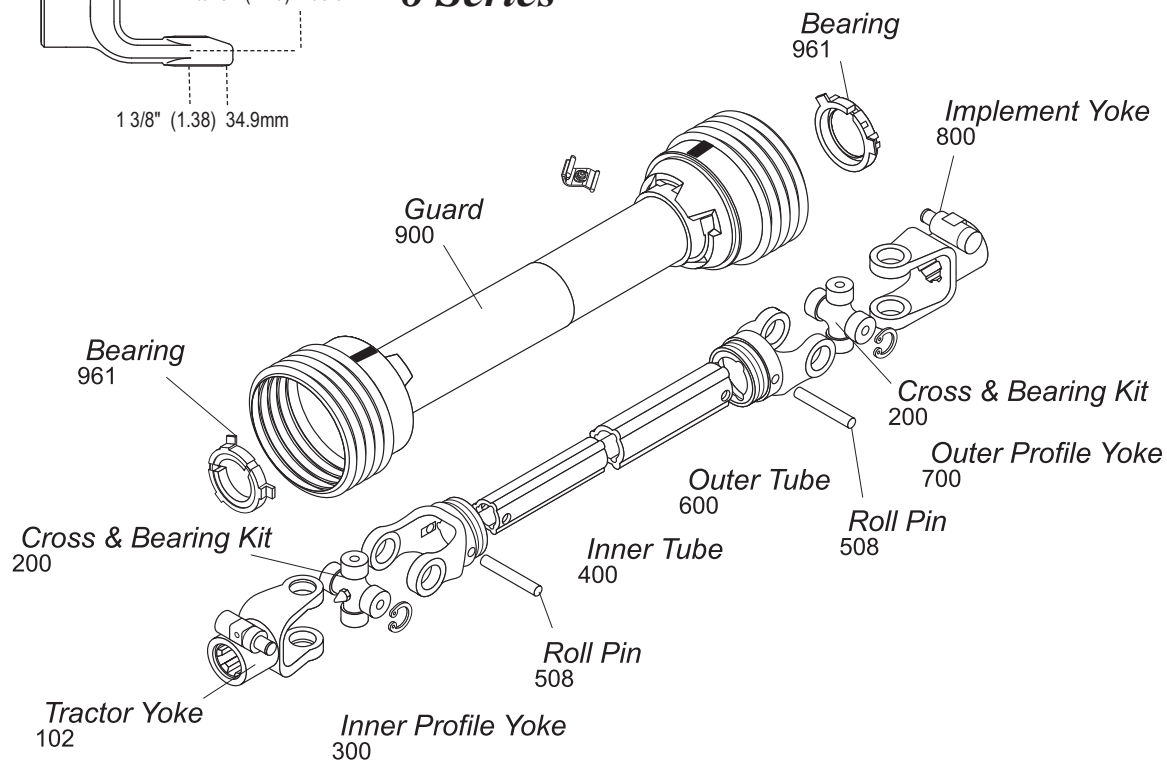
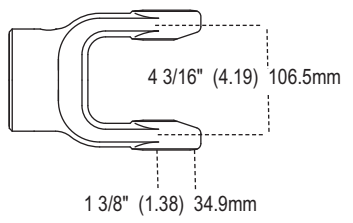
Stock Number	Overall Comp. Length Dim. "A"	Yoke Specifications	
		Tractor Yoke	Implement Yoke
14006748	48"	1 3/8" x 6 Spl. QD	1 3/4" Rd. w/3/8" Keyway
14046748	48"	1 3/8" x 6 Spl. QD	*
14046760	60"	1 3/8" x 6 Spl. QD	*

* Drivelines are furnished without Cross & Bearing Kit and Implement Yoke. Select kit and yoke as required.

Interchanges with Bondioli & Pavesi

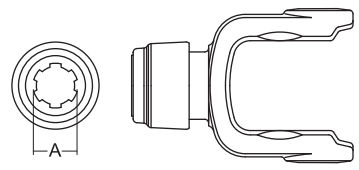
AB8

8 Series



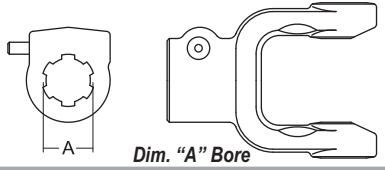
Tractor Yoke

Safety Slide Lock
Repair Kit — Page 139



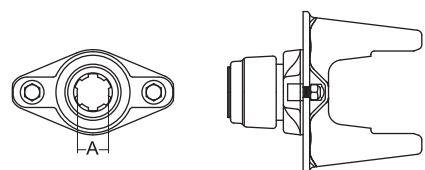
Stock Number	Dim. "A" Bore
101-6806	1 3/8" x 6 Spl.
101-6820	1 3/4" x 20 Spl.
101-6821	1 3/8" x 21 Spl.

Quick Disconnect
Repair Kit — Page 139



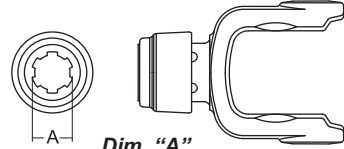
Stock Number	Dim. "A" Bore
102-6806	1 3/8" x 6 Spl.
102-6820	1 3/4" x 20 Spl.
102-6821	1 3/8" x 21 Spl.
102-6828	1 3/4" x 6 Spl.

Ball Shear



Stock Number	Dim. "A" Bore	Shear Bolt
104-6806	1 3/8" x 6 Spl.	3/8" - 16 Gr. 5
104-6820	1 3/4" x 20 Spl.	3/8" - 16 Gr. 5
104-6821	1 3/8" x 21 Spl.	3/8" - 16 Gr. 5

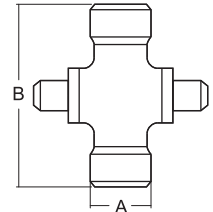
Auto-Lok
Repair Kit — Page 139



Stock Number	Dim. "A" Bore
110-6806	1 3/8" x 6 Spl.

Cross & Bearing Kit (R-Kit)

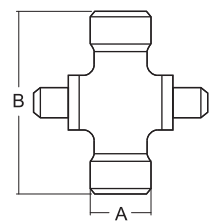
Snap Ring Located In Yoke



Stock Number	Dim. "A"		Dim. "B"	
	mm	in	mm	in
200-6806	34.9	1 3/8" (1.38)	106.5	4 3/16" (4.19)

Extended Lubrication Cross & Bearing Kit (E-Kit)

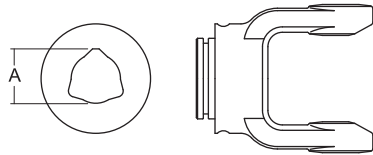
Snap Ring Located In Yoke



Stock Number	Dim. "A"		Dim. "B"	
	mm	in	mm	in
201-6806	34.9	1 3/8" (1.38)	106.5	4 3/16" (4.19)

8 Series (cont'd.)

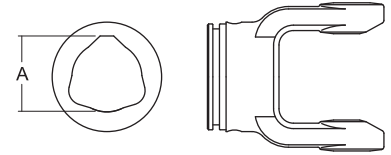
Inner Profile Yoke



With Bearing Groove
(Guard must rotate freely on yoke)

Stock Number	Dim. "A" Bore	
	mm	in
300-6845 (Old Series 8)	45.2	1 25/32" (1.78)
300-6854	54.2	2 1/8" (2.13)

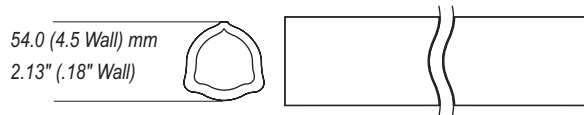
Outer Profile Yoke



With Bearing Groove
(Guard must rotate freely on yoke)

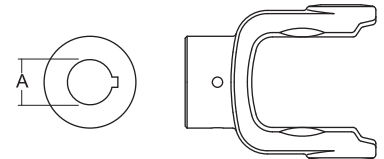
Stock Number	Dim. "A" Bore	
	mm	in
700-6863	63.0	2 31/64" (2.48)

Inner Tube



Stock Number	Length	
	m	in
600-6654	1.5	59 1/16" (59.06)
604-6654	1.0	39 3/8" (39.37)

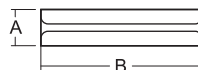
Implement Yoke



Round Bore
With Keyway & Set Screw

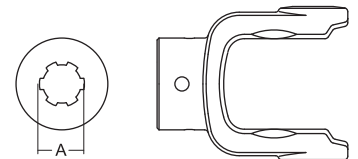
Stock Number	Dim. "A" Bore		Standard Keyway	
	mm	in	mm	in
800-6822	35.0	1 3/8" (1.38)	8.0	5/16" (.31)
800-6824	38.1	1 1/2" (1.50)	9.5	3/8" (.37)
800-6828	44.5	1 3/4" (1.75)	9.5	3/8" (.37)
800-6832	50.8	2" (2.00)	12.7	1/2" (.5)

Roll Pin



Stock Number	Dim. "A"		Dim. "B"	
	mm	in	mm	in
508-0880	8.0	5/16" (.31)	80.0	3 5/32" (3.15)
508-1280	12.0	15/32" (.47)	80.0	3 5/32" (3.15)

Spline Bore
With Pinhole



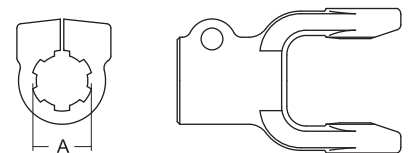
Stock Number	Dim. "A" Bore
801-6806	1 3/8" x 6 Spl.

Outer Tube



Stock Number	Length	
	m	in
600-6863	1.5	59 1/16" (59.06)
604-6863	1.0	39 3/8" (39.37)

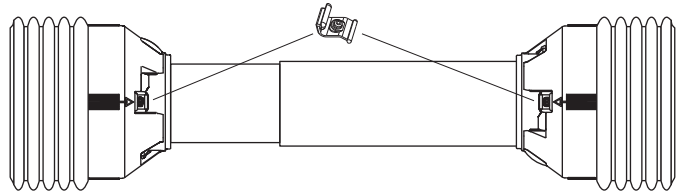
Clamp Yoke



Stock Number	Dim. "A" Bore
807-6806	1 3/8" x 6 Spl.
807-6820	1 3/4" x 20 Spl.
807-6821	1 3/8" x 21 Spl.

Guard

Order Bearings As Required



Stock Number	Overall Driveline Length	Bearing Kit (2-per kit)
900-4548	48"	961-4589
900-4560	60"	961-4589

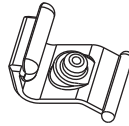
Assembly instructions included with guard

Note: When installing Guards observe the following:

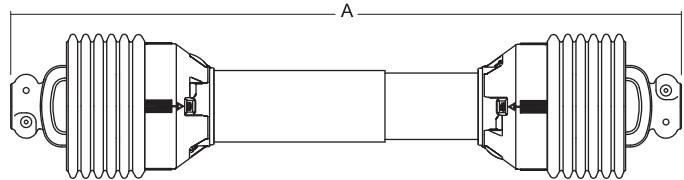
- 1) Install proper nylon bearing (See Page 14)
- 2) Check to insure guards rotate freely on the yokes

Easy Lock™ Replacement Kit

Part Number: 13005000 (4-per Kit)

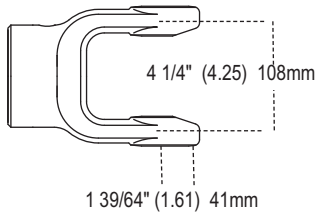


Driveline



Stock Number	Overall Comp. Length Dim. "A"	Yoke Specifications	
		Tractor Yoke	Implement Yoke
14006828	57"	1 3/8" x 6 Spl. QD	1 3/4" Rd. w/3/8" Keyway
14006846	46"	1 3/8" x 6 Spl. QD	1 3/8" x 6 Spl. QD
14006857	57"	1 3/8" x 6 Spl. QD	1 3/8" x 6 Spl. QD
14046848	48"	1 3/8" x 6 Spl. QD	*
14046860	60"	1 3/8" x 6 Spl. QD	*
14066846	46"	1 3/8" x 21 Spl. QD	1 3/8" x 21 Spl. QD
14406832	32"	1 3/8" x 6 Spl. Safety Slide Lock	1 1/2" Rd. w/3/8" Keyway Shear Bolt Yoke

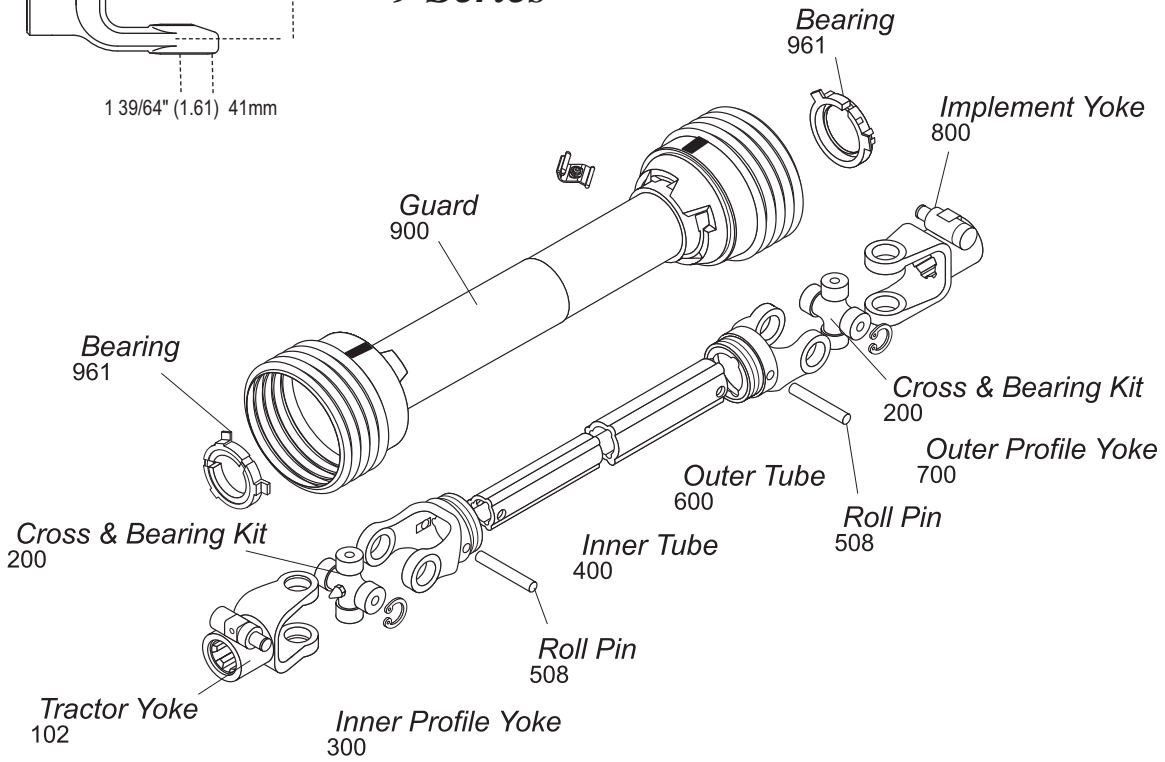
* Drivelines are furnished without Cross & Bearing Kit and Implement Yoke. Select kit and yoke as required.



9 Series

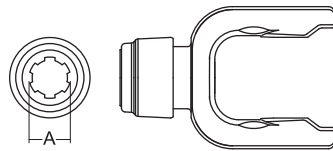
Interchanges with Bondioli & Pavesi

AB9



Tractor Yoke

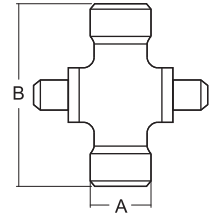
Safety Slide Lock
Repair Kit — Page 139



Stock Number	Dim. "A" Bore
101-6906	1 3/8" x 6 Spl.
101-6920	1 3/4" x 20 Spl.
101-6921	1 3/8" x 21 Spl.

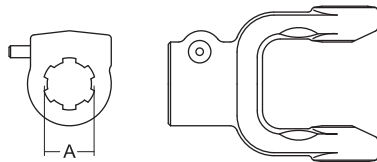
Cross & Bearing Kit (R-Kit)

Snap Ring Located In Yoke



Stock Number	Dim. "A"		Dim. "B"	
	mm	in	mm	in
200-6908	41.0	1 39/64" (1.61)	108	4 1/4" (4.25)

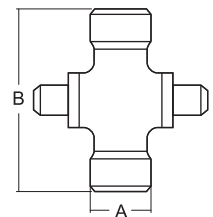
Quick Disconnect
Repair Kit — Page 139



Stock Number	Dim. "A" Bore
102-6906	1 3/8" x 6 Spl.
102-6920	1 3/4" x 20 Spl.
102-6921	1 3/8" x 21 Spl.

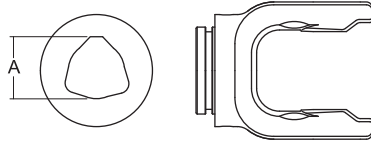
Extended Lubrication Cross & Bearing Kit (E-Kit)

Snap Ring Located In Yoke



Stock Number	Dim. "A"		Dim. "B"	
	mm	in	mm	in
201-6908	41.0	1 39/64" (1.61)	108	4 1/4" (4.25)

Inner Profile Yoke

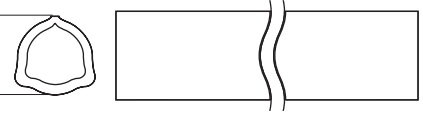


With Bearing Groove
(Guard must rotate freely on yoke)

Stock Number	Dim. "A" Bore	
	mm	in
300-6954	54.2	2 1/8" (2.13)

Outer Tube

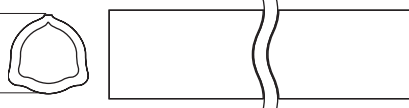
63.0 (4.1 Wall) mm
2.48" (.16" Wall)



Stock Number	Length	
	m	in
600-6863	1.5	59 1/16" (59.0)
604-6863	1.0	39 3/8" (39.7)

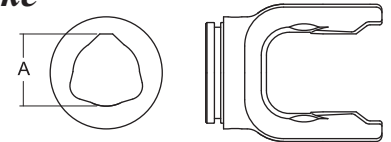
Inner Profile Tube

54.0 (4.9 Wall) mm
2.13" (.19" Wall)



Stock Number	Length	
	m	in
400-6954	1.5	59 1/16" (59.06)
404-6954	1.0	39 3/8" (39.37)

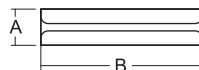
Outer Profile Yoke



With Bearing Groove
(Guard must rotate freely on yoke)

Stock Number	Dim. "A" Bore	
	mm	in
700-6963	63.0	2 31/64" (2.48)

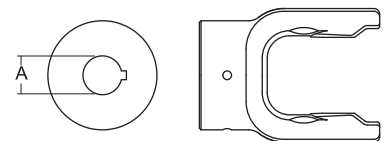
Roll Pin



Stock Number	Dim. "A"		Dim. "B"	
	mm	in	mm	in
508-1080	10.0	25/64" (.39)	80.0	3 5/32" (3.15)
508-1280	12.0	15/32" (.47)	80.0	3 5/32" (3.15)

Implement Yoke

Round Bore
With Keyway & Set Screw

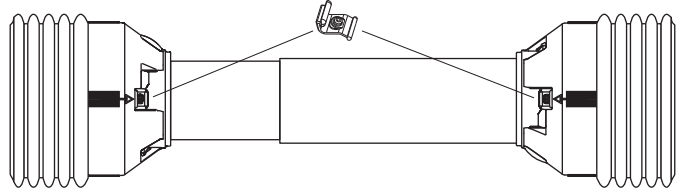


Stock Number	Dim. "A" Bore			
	Standard Keyway	mm	in	mm
800-6922	35.0	1 3/8" (1.38)	8.0	5/16" (.31)
800-6924	38.1	1 1/2" (1.50)	9.5	3/8" (.38)

9 Series (cont'd.)

Guard

Order Bearings As Required



Stock Number	Overall Driveline Length	Bearing Kit (2-per kit)
900-4548	48"	961-4589
900-4560	60"	961-4589

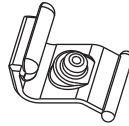
Assembly instructions included with guard

Note: When installing Guards observe the following:

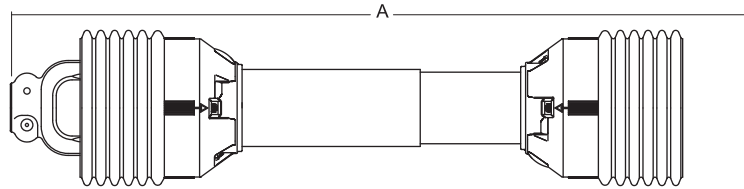
- 1) Install proper nylon bearing (See Page 14)
- 2) Check to insure guards rotate freely on the yokes

Easy Lock™ Replacement Kit

Part Number: 13005000 (4-per Kit)



Driveline



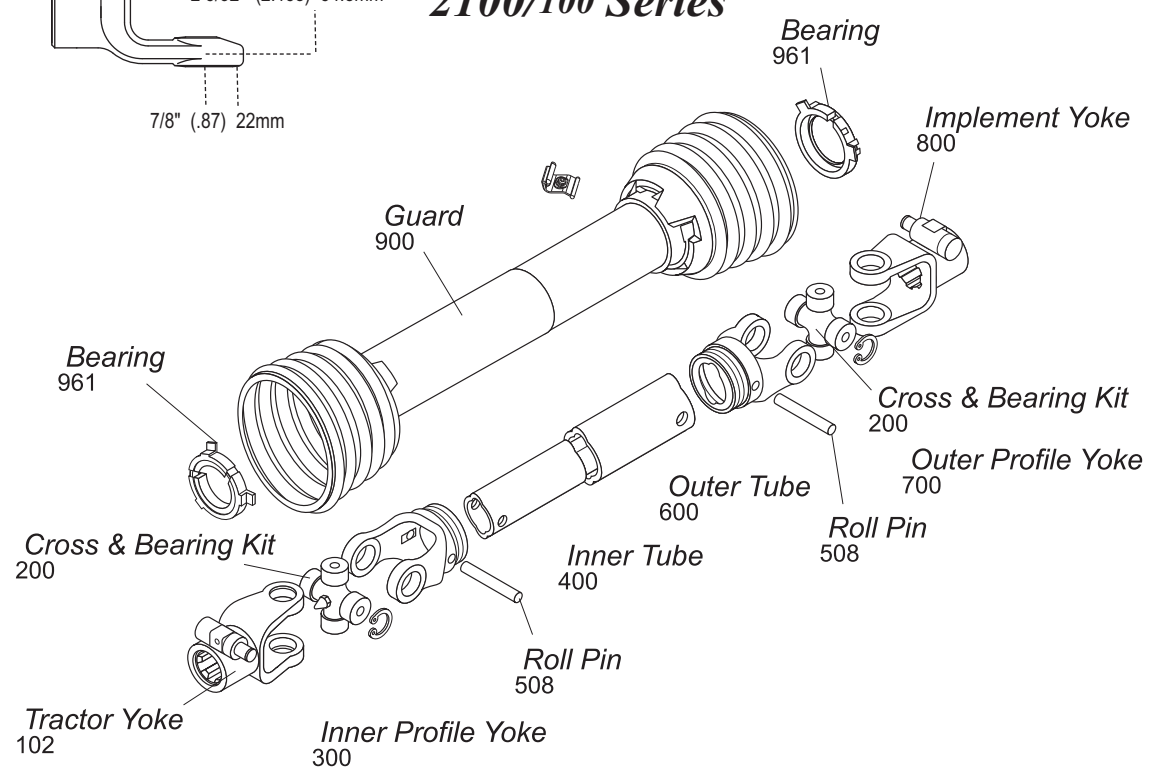
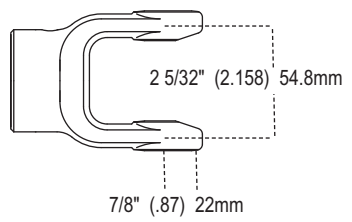
Stock Number	Overall Comp. Length Dim. "A"	Tractor Yoke	Implement Yoke
14046948	48"	1 3/8" x 6 Spl. QD	*
14046960	60"	1 3/8" x 6 Spl. QD	*

* Drivelines are furnished without Cross & Bearing Kit and Implement Yoke. Select kit and yoke as required.

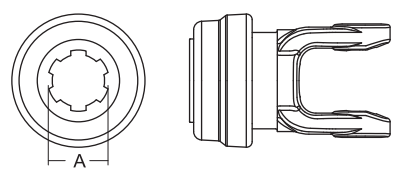
Interchanges with Walterscheid

AW10

2100/100 Series



Tractor Yoke

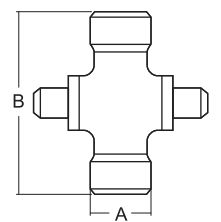


Safety Slide Lock
Repair Kit — Page 139

Stock Number	Dim. "A" Bore
101-7106	1 3/8" x 6 Spl.
101-7121	1 3/8" x 21 Spl.

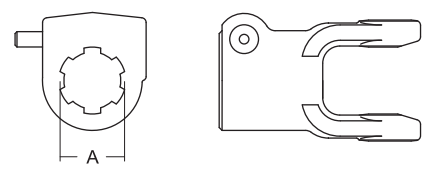
Cross & Bearing Kit (R-Kit)

Snap Ring Located In Yoke



Stock Number	Dim. "A"		Dim. "B"	
	mm	in	mm	in
200-7155	22.0	7/8" (.87)	54.8	2 5/32" (2.158)

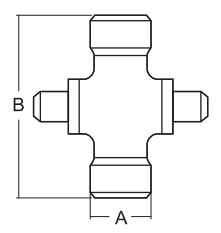
Quick Disconnect
Repair Kit — Page 139



Stock Number	Dim. "A" Bore
102-7106	1 3/8" x 6 Spl.
102-7121	1 3/8" x 21 Spl.

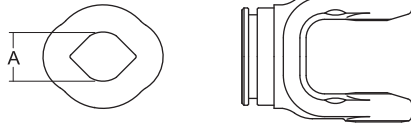
Extended Lubrication Cross & Bearing Kit (E-Kit)

Snap Ring Located In Yoke



Stock Number	Dim. "A"		Dim. "B"	
	mm	in	mm	in
201-7155	22.0	7/8" (.87)	55.2	2 11/64" (2.17)

Inner Profile Yoke



With Bearing Groove
(Guard must rotate freely on yoke)

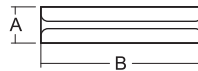
Stock Number	Dim. "A" Bore	
	mm	in
300-7123	23.8	15/16" (.94)

Inner Tube (Solid)



Stock Number	Length	
	m	in
400-7123	1.5	59 1/16" (59.06)
404-7123	1.0	39 3/8" (39.37)

Roll Pin



Stock Number	Dim. "A"		Dim. "B"	
	mm	in	mm	in
508-0850	8.0	5/16" (.31)	50.0	1 31/32" (1.97)

Outer Tube



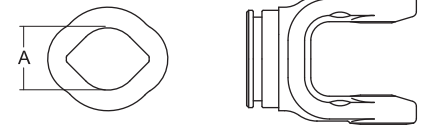
Stock Number	Length	
	m	in
600-7130	1.5	59 1/16" (59.0)
604-7130	1.0	39 3/8" (39.37)

Plastic Guard

Order Bearings As Required

Stock Number	Overall Driveline Length
900-2548	48"
900-2560	60"

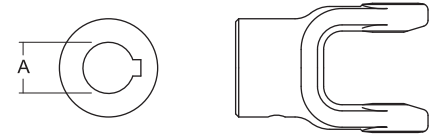
Outer Profile Yoke



With Bearing Groove
(Guard must rotate freely on yoke)

Stock Number	Dim. "A" Bore	
	mm	in
700-7130	30.0	1 3/16" (1.18)

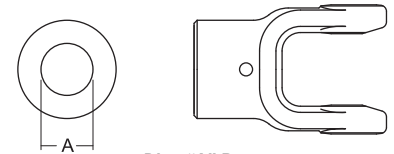
Implement Yoke



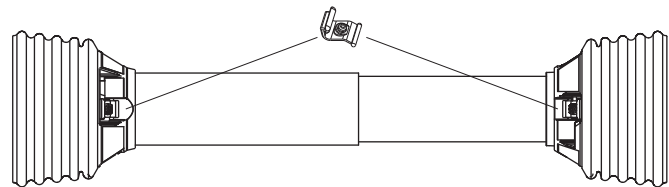
Round Bore
With Keyway & Set Screw

Stock Number	Dim. "A" Bore		Standard Keyway	
	mm	in	mm	in
800-7125	25.0	63/64" (.98)	8.0	5/16" (.31)
800-7130	30.0	1 3/16" (1.18)	8.0	5/16" (.31)

Shear Pin
With Pin Hole



Stock Number	Dim. "A" Bore	
	mm	in
802-7108	25.4	1" (1.00)
802-7110	31.8	1 1/4" (1.25)
802-7125	25.0	63/64" (.98)
802-7130	30.0	1 3/16" (1.18)



Bearing Kit (2-per kit)
961-5005

Assembly instructions included with guard
Note: When installing Guards observe the following:
1) Install proper nylon bearing (See Page 14)
2) Check to insure guards rotate freely on the yokes

Easy Lock™ Replacement Kit

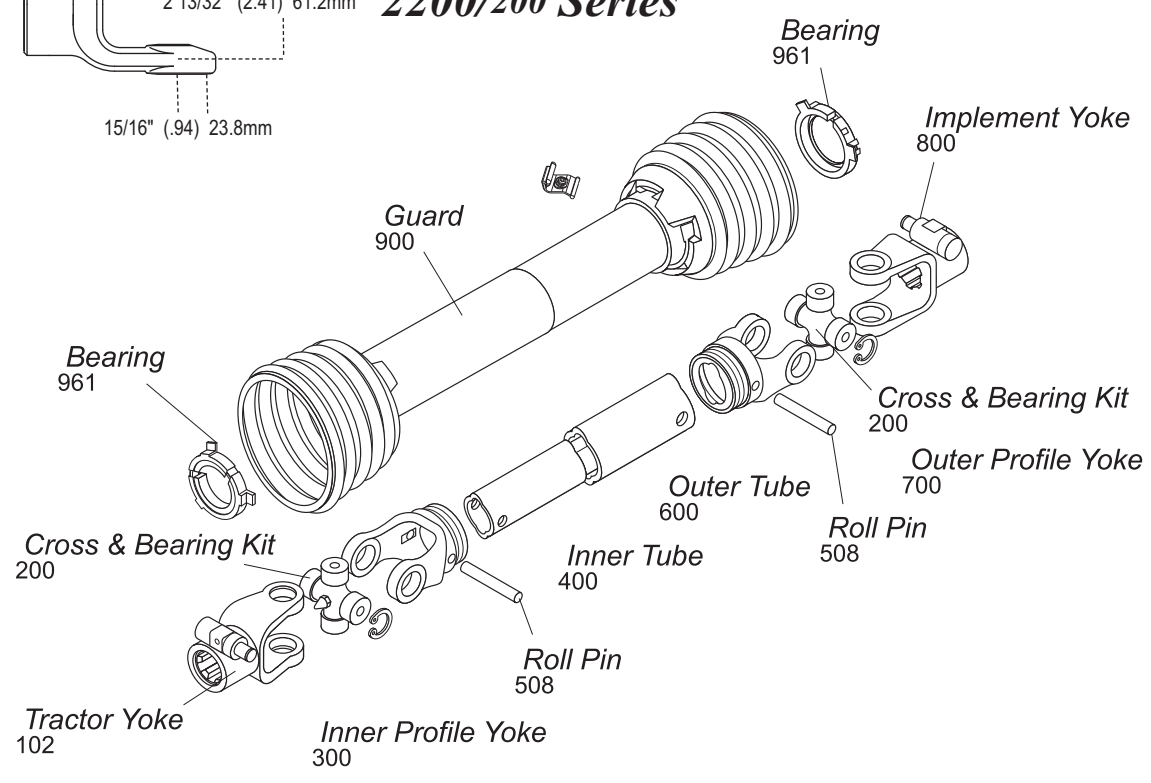
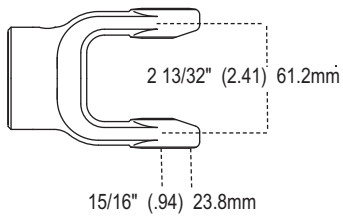
Part Number: 13005000 (4-per Kit)



Interchanges with Walterscheid

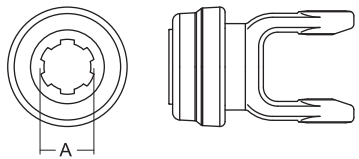
AW20

2200/200 Series



Cross & Bearing Kit and Outboard Yokes interchange with Bondioli 2 Series

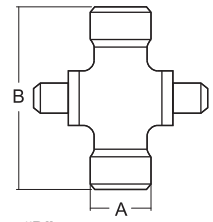
Tractor Yoke



Safety Slide Lock
Repair Kit — Page 139

Stock Number	Dim. "A" Bore
101-8206	1 3/8" x 6 Spl.
101-8221	1 3/8" x 21 Spl.

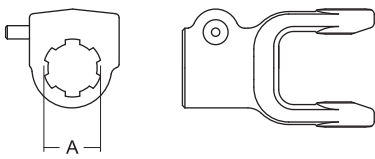
Cross & Bearing Kit (R-Kit)



Snap Ring Located In Yoke

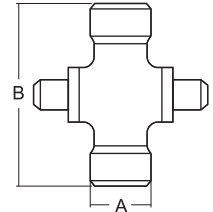
Stock Number	Dim. "A"		Dim. "B"	
	mm	in	mm	in
200-8261	23.8	15/16" (.94)	61.2	2 13/32" (2.41)

Quick Disconnect
Repair Kit — Page 139



Stock Number	Dim. "A" Bore
102-8206	1 3/8" x 6 Spl.
102-8218	1 1/8" 6 Spl.
102-8221	1 3/8" x 21 Spl.

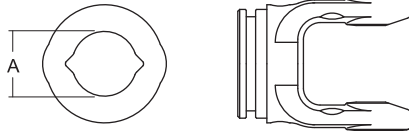
Extended Lubrication Cross & Bearing Kit (E-Kit)



Snap Ring Located In Yoke

Stock Number	Dim. "A"		Dim. "B"	
	mm	in	mm	in
201-8261	23.8	15/16" (.94)	61.2	2 13/32" (2.41)

Inner Profile Yoke



With Bearing Groove
(Guard must rotate freely on yoke)

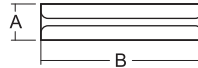
Stock Number	Dim. "A" Bore	
	mm	in
300-7234	34.5	1 23/64" (1.36)

Inner Tube



Stock Number	Length	
	m	in
400-7234	1.5	59 1/16" (59.06)
404-7234	1.0	39 3/8" (39.37)

Roll Pin



Stock Number	Dim. "A"		Dim. "B"	
	mm	in	mm	in
508-1060	10.0	25/64" (.39)	60.0	2 23/64" (2.36)

Outer Tube



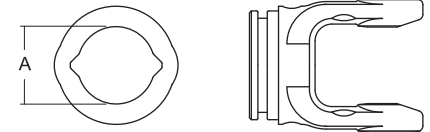
Stock Number	Length	
	m	in
600-7241	1.5	59 1/16" (59.06)
604-7241	1.0	39 3/8" (39.37)

Guard

Order Bearings As Required

Stock Number	Overall Driveline Length
900-2548	48"
900-2560	60"

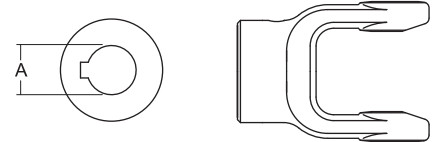
Outer Profile Yoke



With Bearing Groove
(Guard must rotate freely on yoke)

Stock Number	Dim. "A" Bore	
	mm	in
700-7241	41.3	1 5/8" (1.63)

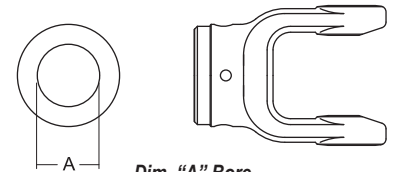
Implement Yoke



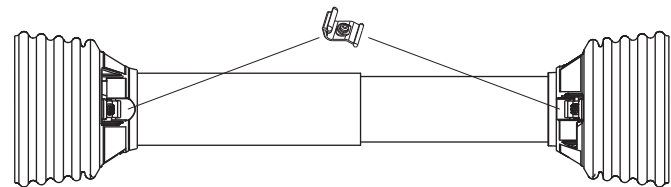
Round Bore
With Keyway & Set Screw

Stock Number	Dim. "A" Bore		Standard Keyway	
	mm	in	mm	in
800-8225	25.0	63/64" (.98)	8.0	5/16" (.31)
800-8208	25.4	1" (1.0)	6.4	1/4" (.25)
800-8230	30.0	1 3/16" (1.18)	8.0	5/16" (.31)
800-8210	31.8	1 1/4" (1.25)	6.4	1/4" (.25)
800-8211	34.9	1 3/8" (1.38)	8.0	5/16" (.31)
800-8218	28.6	1 1/8" (1.13)	6.4	1/4" (.25)
800-8220	31.8	1 1/4" (1.25)	8.0	5/16" (.31)

Shear Pin



Stock Number	Dim. "A" Bore
	mm in
802-8220 (w/3/8" Pinhole)	31.8 1 1/4" (1.25)
802-8222 (w/1/2" Pinhole)	35.0 1 3/8" (1.38)
802-8225 (w/5/16" Pinhole)	25.0 63/64" (.98)
802-8230 (w/25/64" Pinhole)	30.0 1 3/16" (1.18)



Bearing Kit (2-per kit)
961-0251
961-0251

Easy Lock™ Replacement Kit

Part Number: 13005000 (4-per Kit)



Assembly instructions included with guard
 Note: When installing Guards observe the following:
 1) Install proper nylon bearing (See Page 14)
 2) Check to insure guards rotate freely on the yokes