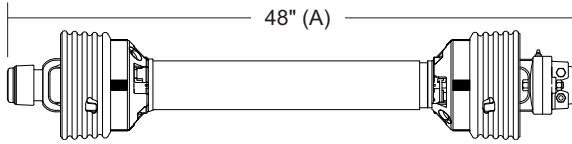
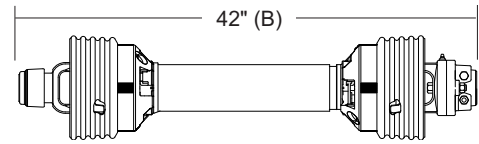




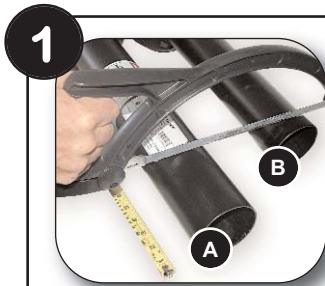
DRIVELINE LENGTH ADJUSTMENT



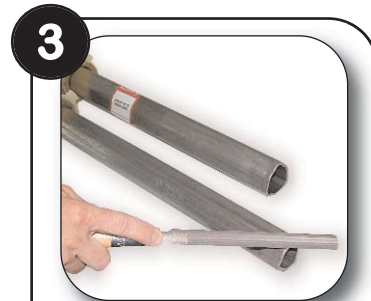
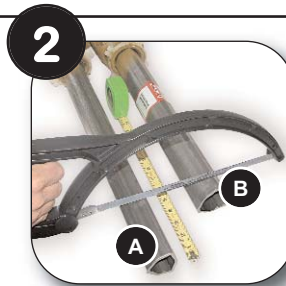
Replacement Driveline



Existing Driveline



1 Remove guard from driveline. Separate driveline halves. Shorten guard halves (Pic. 1) and profile tube halves (Pic. 2) same as existing driveline halves or see example below.



3 Round off all sharp edges and remove burrs.



4 Grease sliding profiles.



5 Reassemble guard halves. Both profile tubes should extend 40-mm (1.58") beyond the end of the guard tubes.



6 Reassemble driveline halves together making sure they slide (telescope) easily and ensure guards rotate freely on yokes.

EXAMPLE: If overall replacement driveline length dimension is 48" (See A), and your existing overall driveline length dimension is 42" (See B), the amount to shorten *EACH* driveline half would be 6". Your driveline is now ready to reassemble and use.